

WOUGHTON GAZETTE



Winter Issue February 2015



Landscaping
page 3

BUDGET
2015/16

page 8/9

Woughton Community Council
33-37 Farthing Grove
Netherfield
Milton Keynes
MK6 4JH

Tel. 01908 395681
email: reception@woughtoncommunitycouncil.gov.uk

Opening hours: Monday to Friday
10am - 4pm

WORDS FROM THE LEADER



Last month we said goodbye to Council Manager Tracy Peters and our Head of Services, Nicky Fulton. Both of them had served the Council for many years and will be sorely missed. However, we wish them well and thank them sincerely for everything they have done for our community.

As one chapter closes another begins and we welcome Claire Hutley as our new Council Manager. I am sure many of you will come across Claire in the weeks and months ahead. Please give her a warm Woughton welcome. I am sure she will soon discover that we have the very best community in Milton Keynes and that this really is the nicest place to work and serve. Welcome Claire.

Cllr Kevin Wilson

WORDS FROM THE CHAIR



Welcome back to all our readers both returning readers and new ones.

This magazine is not only the information platform of Woughton Community Council but also a media outlet for Woughton organisations. If you have an event or a request, advertise it in this magazine. Let's hear what your group are doing.

We are now beginning 2015 with new programmes and, after May, maybe a new look Council. Should any of you wish to become a Councillor by putting yourself up for election, please apply at our offices for guidance and information.

Woughton Community Council has taken over the landscaping but it is a new venture so it would be great to see communities helping where they can; for instance residents' associations could take on responsibility for certain areas. It is, after all, our environment and we can choose to improve it.

Wishing you a successful 2015.

Cllr Pete Orme, Chair

WOUGHTON COMMUNITY COUNCIL MEETINGS

March 2015

Monday 2nd 6pm Full Council

Wednesday 4th 6pm Policy and Resources

Thursday 26th 6pm Scrutiny

May 2015

Monday 11th 6pm

Annual Meeting of Council

Tuesday 26th 6pm

Annual Meeting of the Parish

April 2015

Thursday 9th 6pm Services

All residents are warmly welcome to attend any Council Meeting and have the opportunity to ask questions at an allotted time.

For descriptions of each committee see our website: www.woughtoncommunitycouncil.gov.uk

Councillor Surgeries run every Thursday & Saturday

with Steve Coventry, Kevin Wilson and Hannah O'Neill

at Woughton Council Offices Farthing Grove from 9am.

No appointment needed.

WCC WELCOMES NEW COUNCIL MANAGER



Hello. My name is Claire Hutley, the new Council Manager here at Woughton Community Council. I am looking forward to working with and meeting as many of you as possible.

I was born locally and have a passion for Milton Keynes, having seen it grow over the years and become an exciting place to live, full of activities to take part in.

I previously worked at Bucks County Council and then moved to Milton Keynes Council during the Unitary transfer. During my time there I worked in finance, policy and performance in Children's Services, Environmental Services and Neighbourhood Services. During my time at Milton Keynes my team won national awards, some of those for work done in this area. I was one of the first 100 people nationally to achieve Chartered Manager status from the Chartered Management Institute. More recently I worked in Essex but I am pleased to be back home.

This is an exciting time for the Community Council and I very much look forward to taking part in making those changes that will positively impact on your area and lives. I will work hard with my colleagues to deliver high quality accessible services to you all.

WOUGHTON LANDSCAPING WENT LIVE ON 17TH NOVEMBER 2014

Meet The Team....



Ian Tegerdine
Landscape Manager



Paul Barker
Landscape Operative



Sophie Gibbens
Landscape Operative

Our team have "hit the ground running" and all recorded priorities have been dealt with on seven estates. We are now focusing on each estate separately to complete the work required and then returning in a recurring pattern. Of course, future priorities will be dealt with as they occur.

Whilst WCC promises to carry out the landscaping maintenance to the very best of our ability there will be some issues that we will be unable to deal with directly. Issues that may arise vary from unknown land ownership to the unpredictability of the weather. However, we will advise you on a case by case situation regarding these specifics. For example, tree pits in Coffee Hall are the responsibility of MK Council Highways department.

If you have any queries, questions or concerns regarding any areas of landscaping please do get in touch on [01908 395681](tel:01908395681), email: landscape@woughtoncommunitycouncil.gov.uk

You will appreciate that this is not a small project that WCC is undertaking but it will achieve some brilliant results for the area of Woughton and continue our councils long standing commitment to develop community capacity building, promote local 'ownership' and civic pride.

WOUGHTON ADVICE SERVICE



REPRESENTATIVES WILL BE AVAILABLE FOR YOU TO SPEAK WITH from

- MK Council
- Money Matters
- MK Money Lifeline
- Community Action MK
- the private rental sector
- Mitie
- DWP
- Job centre plus
- Affordable warmth
- Places for people
- Stonewater housing ass
- NEP for help finding work and more

DISCUSS ISSUES SUCH AS:

- Benefit advice and support
- Getting involved in your local community
- Welfare reform
- Home Swapper
- Property downsizing
- General money advice
- Debt advice
- Homes in multi occupancy
- Help finding work

No appointment necessary



Drop In Advice Sessions

All this can be done in one place - call into an advice session and get help from different agencies in one location, no appointment necessary!

What people have said

"I found it very helpful and was able to get so much information from the 3 agencies"

"I am very grateful, I have many debts, money advice are helping me to sort them out, this is something I would not have been able to do myself."

"It is easier to access services on the same day under one roof without having to wait too long."



Woughton Community Council
Farthing Grove, Netherfield First Tuesday of every month
11am - 1pm

JOB CLUB
 Every Monday
 1pm - 3pm

Free • Confidential • Information • Advice • Guidance • Training courses • Employment opportunities



Welcome to **connexions**

CONNEXIONS:MK

Free • Confidential • Information • Advice • Guidance • Training courses • Employment opportunities

Coffee Hall Youth Centre, Jonathans, Coffee Hall. Every Tuesday
12pm till 2pm – Rebecca and Jay
Woughton Advice Service, Netherfield. Every Wednesday
2pm till 4pm – Rebecca and Fiona

WOUGHTON ADVICE SERVICE WALK IN

Tuesdays 1.30pm to 6pm
 (except for first Tues of month 3.30pm start).

Thursdays 10am – 4pm

Fridays 2pm – 4pm

POLICE REPORT

Happy New Year to you all. Your local Neighbourhood Policing team has been working hard over the winter supporting Operation Darknight which is the Milton Keynes wide response to house burglaries. I am pleased to report to you that current figures are showing yet another reduction in burglaries across the whole of the city meaning there are less victims of the most despicable crime. We will continue to support this initiative in the coming weeks and the team will be out and about on patrol across the whole area to ensure that this reduction in offences can continue.

We can all play our part in crime reduction. Here are three really good websites that are available to everyone to use www.securedbydesign.com for more information on property marking. Register your valuables for free at www.immobilise.com to help police identify property if it is stolen and finally, please complete the online security assessment at www.thecrimepreventionwebsite.com to ensure your home is secure. For those of you who are not so sure about the internet please

Speak to one of the team for help when they are out and about or call them on 101. Remember there is also Crime Stoppers on 0800 555111 if you wish to report anything anonymously.

There has been a change in legislation concerning anti social behaviour and the powers the police have in relation to dealing with such matters. I am very pleased to tell you that one of the neighbourhood team, PC Mark Ridley, working with the MK Council Housing officers achieved a closure notice on a property in Netherfield using the new legislation. This gave the neighbours some respite from the antisocial behaviour they were enduring and allowed the Council and Police some time to look at more long term solutions to the problem. We hope to use this power again in the future to make Woughton a safer place to live and work.

Thanks,
Richard Colson
Sergeant South Neighbourhoods, Milton Keynes
Thames Valley Police



LANGLAND SCHOOL IS LOOKING FORWARD TO A BUSY SPRING

After the success of the Christmas Fayre, Langland School's PTA have a busy calendar of events coming up this spring including a Valentines Disco for our pupils, Healthy Eating and Cooking Workshops for Parents and an Awards Evening at the end of March to showcase pupil and teacher achievements as well as celebrating our strong links with the community.

Every month our PTA including parents and staff host a 'Community Café', which has a different theme each time. Recent Cafés have included making Christmas Wreaths and Santa Sleighs (made from sweets!) and our Literacy Co-ordinator recently hosted a 'Helping your Child with Reading' session, which was very popular and parents got to make 'pop-up books'!

This term, our Maths Co-ordinator is leading a 'Helping your Child with Numbers' session for parents and we are also hosting a series of 'cooking on a budget' healthy eating sessions that will be led by our PTA and supported by

our community partners including Woughton Community Council and Community Action: MK. We may even use some of our very own vegetables grown by pupils on our school allotment!

SCHOOL ALLOTMENT CREW. This term, our school will continue to raise awareness and highlight the importance of keeping our school clean and tidy and our school environment crew have led litter picks in school and we are planning another community litter pick in March 2015 so that pupils and their families can lead the way to help keep Netherfield tidy.



WOUGHTON COMMUNITY COUNCIL PRECEPT 2015/16

Following consultation, Woughton Community Council (WCC) have approved their budget and precept for the next year, commencing April 2015.

It does involve a Council Tax increase of 3% but our share of the total bill is relatively small and this increases your Council Tax bill by less than 0.5%.

However the budget as approved will maintain all of our services and represents additional resources to some priority areas. Our highly successful Advice Service for example is set to provide more opportunities for residents across Woughton of all ages to have access to good professional advice on a wide range of topics and issues. Look out for further details in due course.

The Community Council is here to serve you and the local estates and communities where you live.

During the course of the year we will be serving all of our areas.

We have now taken over landscape maintenance from Milton Keynes Council (other than specialist tree works). Our small landscape maintenance team have already made a difference and you will see an improved landscape maintenance service during the next year. Also, we have a grant aid budget where local groups and organisations can apply for funds. Half of this money is ring-fenced through a formula to each of our estates ensuring all areas get a fair share of available funding.

Chair's awards 2014



**Our Landscape Team
improving the
environment**



WCC operate youth services, our community staff support local groups and a project budget as well. They are always keen to help so please ask. The Advice Service provides important advice on a range of issues including housing, benefits, employment and much more. We are assisted in this by the CAB and many other voluntary and statutory groups. Our Annual Carnival provides a great opportunity for the community to let their hair down and have a good time. Our Chair's Awards scheme showcases the great community work going on by so many people.

One final note relating to the Budget. Woughton is a great area, but it is the poorest. Our resource base is the lowest in the city and the product of a £1 Band D Tax only yields 42p per property, partly as a result of government cuts to people on benefits. We are continuously putting the case for additional help and support to our area and we will continue to do so. We would however be in a much worse position if it wasn't for the excellent work being done by so many people throughout Woughton so thanks indeed for all your efforts and support.

On the next page you will see details of our agreed budget and examples of some of the services we are providing for you.

Cllr Kevin Wilson, Leader WCC



BUDGETED EXPENDITURE FOR 2015/16

Expenditure	
Service Staff Costs	203,489.00
Projects	21,000.00
Carnival & Large Events	7,000.00
Grant Aid	11,000.00
Meeting Places	25,000.00
Local Initiatives	4,750.00
Dog & Litter Bin Costs	6,000.00
Sundry Costs	6,500.00
Property Fund	20,000.00
Events & Hospitality	2,000.00
Democratic & Admin staffing costs	112,365.00
Office Accommodation	73,000.00
Office Administration	10,000.00
Insurance inc vans	4,500.00
Training & Conferences	6,500.00
Affiliations	1,900.00
Audit Fees	3,500.00
Stationery	1,500.00
Newsletter & External Communications	14,164.00
Newsletter & External Communications (staff)	11,896.00
Member All's & Exp's	11,500.00
Members IT	2,500.00
Environment grant programme	4,600.00
Replacement programme	5,000.00
Expenditure Total	569,664.00
Income	2,200.00
Grant	147,643.76
Precept	354,537.87
Reserves	235,971.35

EXAMPLES OF SERVICES PROVIDED BY WOUGHTON COMMUNITY COUNCIL

Landscaping.
Annual carnival.
Dog bins on local estates and litter bins at local centres.
Woughton Advice Service (WAS).
Youth clubs & facilities on most estates.
Speed indicator device on Saxon St.
Regular estate inspections resolving environmental issues.
Grants to local groups & organisations.
Support to local Residents' Associations & Action Groups.
Support for lunch clubs and other projects for the elderly.
Quarterly newsletter.
Meeting Places for hire.
Regular liaison with Police on crime & community safety issues.
Advice & guidance on community issues.
Provision of recycling sacks & dog poo bags.
Working with partner organisations to enhance and improve the local area.
Annual Community Awards scheme
Support with activities throughout the school holidays.

As a leader of the Council, I am as always happy to hear from you or meet you if you have any issues or concerns.



Please feel free to contact me at kevin.wilson@woughtoncommunitycouncil.gov.uk

or telephone the office on 01908 395681

**or write to me at
Woughton Community Council
33-37 Farthing Grove, Netherfield,
Milton Keynes MK6 4JH**

GARDEN TOOL LENDING

Not everyone has their own gardening tools. Woughton Community Council has a small collection free for local residents to hire. These include strimmers, lawn mowers, spades, forks, hedge trimmers and a few small hand held tools.

If you are a resident living within Woughton Community area and would like to borrow any tools please contact Lorraine on 01908 395681



FACILITY HIRE

Woughton Community Council manages Netherfield Meeting Place on Farmborough, Tinkers Bridge Meeting Place on Marshworth and Coffee Hall.

Please contact Woughton Community Council Offices if you wish to book one of the halls. Also, the Meeting Room at the Woughton Community Council offices on Farthing Grove can be booked.

Ring (01908) 395681 for further details



Stop Loan Sharks

As a debt 'owed' to a loan shark is not legally enforceable, they frequently resort to violence and intimidation to get their money - even though the debt may have been paid off several times over due to extortionate interest rates.

As well as investigating loan sharks the illegal money lending team is focusing on prevention as well as cure. It has financial inclusion partnership officers working closely with partners such as credit unions and housing associations as well as grassroots community organisations to help people understand their finances, point them towards legitimate sources of credit and encourage them to start savings accounts.

The team is urging members of the public who have been victims of loan sharks or who know that loan sharks are operating in their area to contact them on the **24-hour confidential hotline 0300 555 2222**, text 'loan shark' and a message to 60003, email reportaloanshark@stoploansharks.Gov.Uk or visit www.Direct.Gov.Uk/stoploansharks.

BARGAINS & BRUNCH

At Tinkers Bridge Meeting Place

Every Wednesday
(Term Time)
12pm - 2pm

Come Along For Something To Eat & Pick Up A Bargain



WOUGHTON AND THE MK DONS

The Woughton Pavilion and Playing Fields have been a long-term place of sporting focus for local people. For the past ten years many of the facilities have been 'temporary home' to the MK Dons Football Club as their main training base.

The Academy uses the Pavilion and Playing Fields extensively, and has ten age groups from under 9 years to under 18 years. The full time Apprentices (16-18 year olds) use it as a key training and educational base most days of the week.

We look for families who could provide a stable and supportive environment for young players

(16-17 years) who are moving away from home for the first time. Suitable families/homes would need to meet certain set criteria, be interviewed by the club and receive a DBS/CRB check in line with current regulations. Players would be with the host families from the beginning of July through to the following May, generally from Sunday evening through to Saturday mornings (dependent on fixtures and college commitments) with short breaks at Easter and Christmas/New Year.



General requirements are : Live within the local Milton Keynes area, have a suitable spare bedroom, provide at least one cooked evening meal a day and nutritious snacks.

If you would like to explore hosting a young apprentice, assisting in their transition and development, please contact me on tim.cutting@mkdons.com, or write to me at the football club.

Tim Cutting, Academy Welfare Officer

COMMUNITY RENEWABLE ENERGY



How much impact does increasing energy costs have on you?
How vulnerable is your community to energy fluctuations and what can we do to reduce this?

Do you think there is a link between high energy cost and poverty?
Are you able to support and encourage community based energy projects?

Are you passionate about your environment?

We need to talk about energy because it matters and we are interested in all residents in Woughton to discuss how we can help our community to become involved in community based energy projects.

The insulation has been done, also low cost cooking appliances. We now need to talk about renewable energy coming to our community. What do you think about community based renewable energy project using solar PV?

Share your thoughts about your action as a stakeholder by email to

jermaine.campbell@woughtoncommunitycouncil.gov.uk Or call 01908 395681/ 07525808660

CHANGES TO THE DANGEROUS DOGS ACT

The amended Dangerous Dogs Act came into effect in England and Wales on 13 May 2014. This law applies to all dog owners no matter what size or breed, whether your pet is a Chihuahua, a Cockapoo or a Collie cross.

While owners need to be fully aware of all the changes, the biggest difference from now on is the Act also covers incidents on private property in addition to public spaces. This includes your own house and both front and back gardens.

A dog doesn't have to bite to be deemed dangerous in the eyes of the law. Generally, if a dog bites a person, it will be presumed to have been 'dangerously out of control'. However, even if the dog does not bite but gives the person grounds to feel that the dog may injure them, the law still applies.

DIARY DATES

FOR WUGHTON ADVICE SERVICE

see page 4

MOORLANDS COMMUNITY CENTRE BEANHILL

Contact 01908 679819

TINKERS BRIDGE DROP IN every Monday,
Tuesday & Thursday 10am – 12pm.

TINKERS BRIDGE RESIDENTS

ASSOCIATION Last Thursday of month 7.30pm
Tinkers Bridge Meeting Place

CHATTER & NATTER every Thursday 10.30am
– 12pm WCC Offices

NETHERFIELD DOERS Fridays 12pm - 3pm
Netherfield Meeting Place

NETHERFIELD RESIDENTS'

ASSOCIATION Last Wednesday of month 7pm
WCC Offices

LEADENHALL RESIDENTS ASSOCIATION

Second Thursday of month. 7.30pm
Leisure Centre

BUSY BEES LUNCH CLUB for over 55s.

Coffee Hall Meeting Place. Tuesdays 11am -1pm



CARNIVAL

WUGHTON COMMUNITY

COUNCIL are pleased to announce
the date for this year's Carnival

Saturday 27th June 2015

Theme: Mardi Gras

To get involved in the Parade,
Arena or to hold a Fundraising Stall
contact Julia:

01908 395681/07983 590 551

julia.bandy@woughtoncommunitycouncil.gov.uk

After School Club & Holiday Playscheme For children 4½ - 14years

Netherfield Children's Play Centre

Netherfield Children's Play Centre offers high quality play opportunities
in a safe, comfortable, friendly and stimulating environment.

The play programme is designed in consultation with the children
to engage, entertain and meet the differing needs of all the children.

We offer activities such as den building, fire-play, arts & crafts,
cooking and free play.

After School Club

We operate a pick-up service from a
number of local schools.

**Cost: 3:00pm – 6:00pm
£7.50 per session**

If you do not require pick-up –
we are happy for your child to walk to, or be
dropped off at the centre. (Langland School
attendees qualify under this service)

Only £7.50
per session for
After School Club

Only £18.00
For all day session, during
School Holidays

**For further info,
please Tel: 01908 678144**

Holiday Playscheme

During the school holidays
we run playschemes, with various
session times available, designed to
suit parental needs and offer trips out
to various locations.

Cost and session times:

8:00am – 6:00pm £18.00 per day
8:30am – 3:30pm £14.50 per day

SPRING YOUTH PROVISION

Mondays - Netherfield Open Access Seniors

Netherfield Meeting Place 7.00-9.00pm
For young people aged over 14yrs

Wednesdays - Tinkers Bridge Junior Youth Club

Tinkers Bridge Meeting Place 6.30-8.00pm for 8-12 yr olds
Offering a safe space to chill with friends, play games and do craft & cookery projects

Wednesdays - Beanhill Open Access Seniors

Moorlands Centre 8.30-9.30pm For young people aged over 12yrs

Thursdays - Eaglestone Junior Club

Falconhurst School 5.30-7.00pm
A fun place to relax & meet friends, with games and arts & craft activities for young people in School years 4,5 & 6

All Youth Clubs are staffed by local, experienced, trusted & friendly youth workers

Tuesdays Netherfield Table Tennis

Netherfield Meeting
Place 7.30-8.30pm.

A closed session for any young people wanting to play, learn or improve their Table Tennis.

With an experienced
coach and
supportive youth
team staff.

**FIND US
ON**



YWAS ADVICE SERVICE FOR 13-25s

Your supportive local youth workers can offer help with job searches and CV preparation, advice & referrals about money or housing issues.

C.Card: Free condoms, pregnancy & Chlamydia test service & emergency contraception referrals.

**Tuesday 5.45 -
6.45pm**

Farthing Grove WAS

Mondays 6-7pm

Netherfield Meeting
Place

ALL WUGHTON COMMUNITY COUNCIL YOUTH SERVICES ARE FREE TO LOCAL YOUNG PEOPLE

VOLUNTEERS NEEDED

If you are keen,
community centred, youth focused
and interested in making a
difference volunteering
regularly or occasionally,
contact Tash or the office

FOR INFORMATION ON ANY OF OUR YOUTH PROVISIONS PLEASE CONTACT:

Tash Darling on

t: 01908 395681 or 07949402862

tash.darling@

woughtoncommunitycouncil.gov.uk

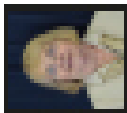
* To contact our coordinator by email:

Start the email with the councilor district name followed by a dot. Then that name added to greengrids@nashville.gov or greengrids@metropark.gov at the end. Example: timothy.morris@nashville.gov

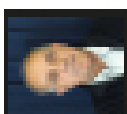
EAGLESTONE



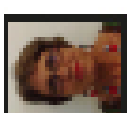
Kevin Williams
07806-007806



Pam Williams
07806-007806

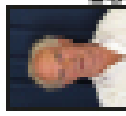


Tony Morris
07806-007806

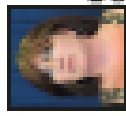


Tyrone Thurston
07806-007806

CORNER HALL



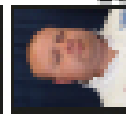
Brian Walker
07816-008166



Donna Corneley
07816-008166



Tony Morrison
07816-008166

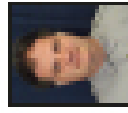


Mark Bland
07816-008166

Pearlree Bridge



Lisa Barr
07776-007776



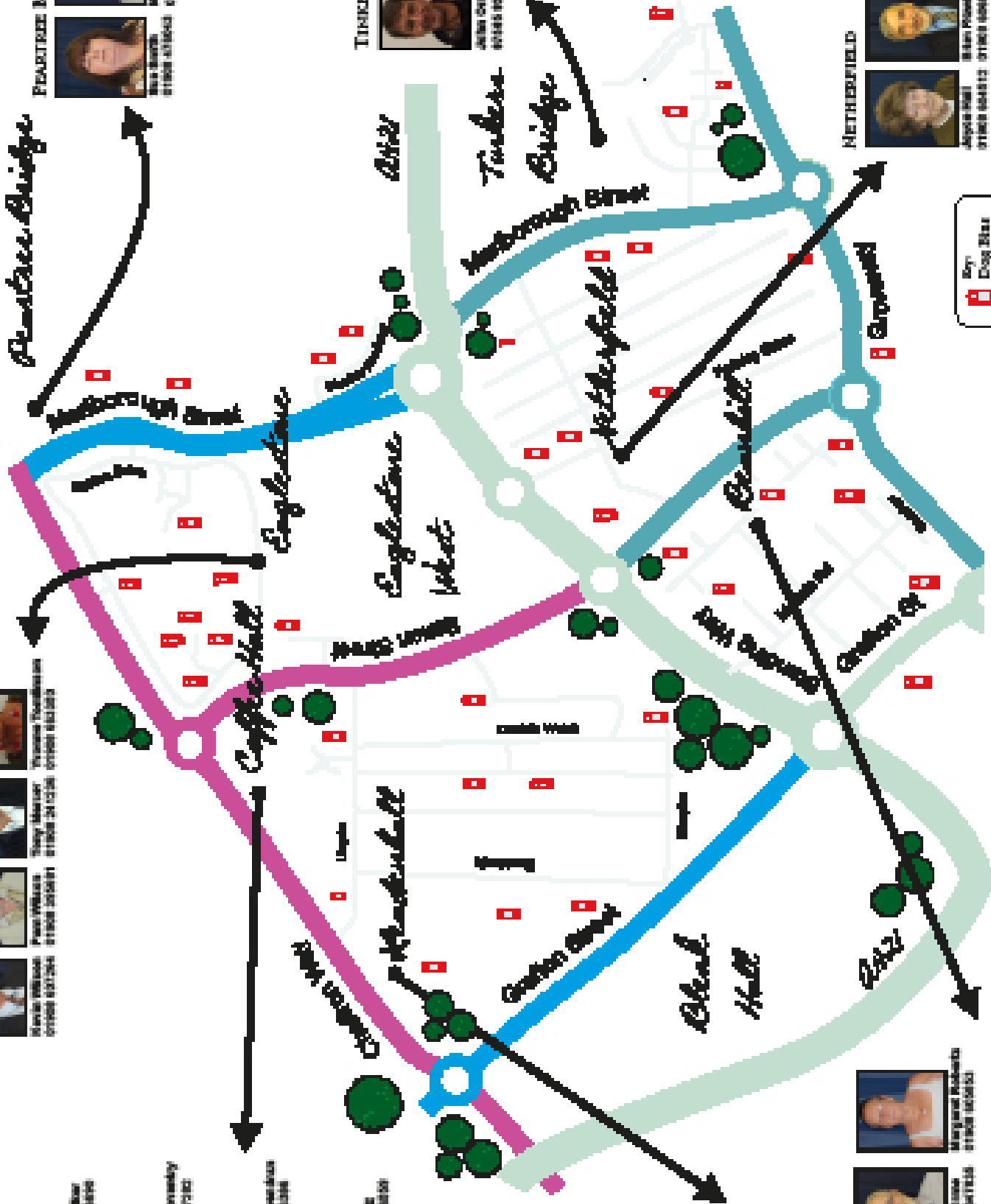
Brian McCullough-Kivela
07776-007776

PEARLREE BRIDGE

TINDERS BRIDGE



James Orr
07836-008366



LEADERHALL



Kara Corneley
07846-008466

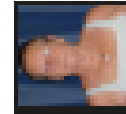
BEAMHILL



Kim Edinger
07846-008466



Peter Clark
07846-008466

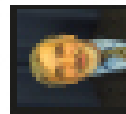


Margaret Roberts
07846-008466

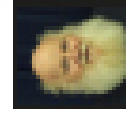
METHERSFIELD



Joseph Hill
07866-008666



Brian Pennington
07866-008666



Lori Ruggs
07866-008666



Tracy Brown
07866-008666

By: **Dog Bar**