

Woughton Community Council Newsletter

MY WOUGHTON Gazette

SUMMER EDITION

JULY 2022



Beanhill



Coffee Hall



Eaglestone



Leadenhall



Netherfield



Peartree
Bridge



Tinkers
Bridge

06

Cost of living **Support**

08

Platinum Jubilee Celebrations

15

Parking within the Parish

The official source of parish news and
information to residents of Woughton


WOUGHTON COMMUNITY COUNCIL | WOUGHTON COMMUNITY COUNCIL HUB |
THE LOCAL CENTRE | GARRAWAYS | COFFEE HALL | MILTON KEYNES | MK6 5EG

TEL: 01908 395681 | EMAIL: reception@woughtoncommunitycouncil.gov.uk

OPENING HOURS: Mon / Tues / Thurs = 9am - 5pm | Friday = 9am - 4pm Weds = 9am - 12pm


please check website due to Covid 19 restrictions






01908477106


THE OLD BARN
BARNFIELD DRIVE
NETHERFIELD
MILTON KEYNES






MEN IN SHEDS STARTED UP IN 2017 AND CONTINUED TO WHERE WE ARE NOW. OUR PRICES ARE REASONABLE

We are a community project
We are all volunteers and are looking for more to join us. Men and ladies welcome
We offer a work experience please enquire...
We also offer pat testing
Please enquire.
Monday to Thursday 10 till 4 pm





Tenant involvement opportunities
Register your interest now





MK Council is recruiting tenants who'd like to be involved as a critical friend to the council's Housing Service.

We're developing several different engagement opportunities for interested tenants who'd like to be involved. Full support will be provided by the council's Resident Engagement Team.

To find out more or register your interest, please contact us:

Email: residentengagement@milton-keynes.gov.uk

Call: 07557 318943 and 07765 343451

Visit: www.milton-keynes.gov.uk/housing/getting-involved

www.milton-keynes.gov.uk





Netherfield Residents Association(NRA)
Stratford Upon Avon
Saturday 6th August 2022

£6 a Ticket, payment must be made
when booking, or a deposit.

Free Raffle ticket for each ticket purchased
Allocated seats & Toilet on board
Sweets on the Coach, info sheets
01908 – 676320

Be at the pickup point 8.45am
Old Buckland Lodge site, Netherfield

Coach leaves old Buckland Lodge site at 9am & leaves Stratford Upon Avon at 5pm to return home.
Anyone under 16yrs must be accompanied by an adult.

If you would like a ticket contact the Netherfield Residents Association on 01908-676320 at 273 Broadlands Netherfield to book NOW!

Contact Janette
01908-676320
This event has been
Part funded by Woughton
Community Council & NRA





time to
Talk
FREE NATIONAL
HELPLINE
0808 801 0688



www.annerobsontrust.org.uk/helpline-service



The Woughton Wellbeing and Advice Service is here for the residents of the Woughton Parish to help with any issues or concerns you may have. We aim to help within the advice session or sign post residents on to the relevant agencies who may be better positioned to help.

Contact the Wellbeing and Advice Service on 01908 395681 or email was@woughtoncommunitycouncil.gov.uk

You can also access sessions at our local Family Centres. - Hedgerows (on Tuesdays) or Moorlands (on Wednesdays)











Hello Lovely people of Woughton,

I hope this issue of The Gazette finds you and yours well.

The Queens Platinum Jubilee

Its now mid-summer and the jubilee went off without a hitch. Lots of events on the estates of the Parish and I'd like to say well done once again to the Resident Associations on our estates for putting on events to celebrate 70 years of Queen Elizabeth II. It was a huge milestone in our history and wish Her Majesty well.

New Ambassador

It's a new council year for us at Woughton, having a new Ambassador and saying Farewell to Leadenhall's Councillor, Yvonne Tomlinson who is off to pastures new. We wish her good luck and good health and thank you for her contribution to the Parish. We look forward to welcoming a new Councillor in the fullness of time.

Caterpillars

We had the issue of the caterpillars, which has now subsided, and the moths have flown off into the blue wild yonder.

Youth Activities

Looking forward, we have the youth activities soon and even though we are not on all estates, ALL young

people can access the activities so please don't be shy - visit all the ones that looks like your kind of thing.

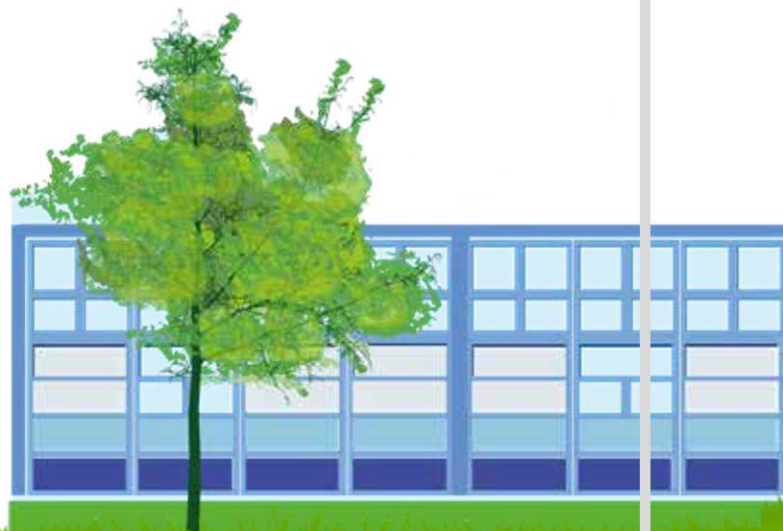
Events near You

Now the weather is warmer and drier, lots of yard sales and bingo nights and more are happening, so please keep your eyes peeled for things happening near you.

Well I'm off to get a long glass of something cold, and get some sun, so please take care, remember don't leave dogs in cars, sunscreen, hat ... and umbrella.

See you soon.

Sue Smith



The Platinum Jubilee Woughton Celebrates!



- Coffee Hall, Tree Planting -

The Jubilee weekend took place between the 2nd and 5th of June, with a range of activities and events taking place across the parish. Hundreds of people attended, enjoying everything from trifle to rodeo bulls, kites to cake sales.

Thursday saw Jonathans Court start proceedings with an afternoon event / garden party and Ashby House with a tree planting. This was followed later with the Woughton Beacon lighting, after a jacket potato and jubilee trifle tea. The Beacon, despite being smaller than we may have hoped, flamed brilliantly, and burned nicely.

Friday saw the Eaglestone Kite Festival, where WCC delivered gazebos, generator and the gas-powered urn to support the event. With an estimated 350 attendees (and 100 kites being snapped up in less than an hour), this was a fabulous community event, bringing lots of local groups together.

Friday also saw Coffee Hall Residents Associations event, with a programme of live music, face painting and food stalls. Loads of people came and, despite ordering tables and chairs for 160, many people found themselves with picnic blankets as all tables were full! A lively and busy few hours.



- The Ambassador at Jonathan's Court -



Saturday had events at Tinkers Bridge, Beanhill and Netherfield – there was a damp start to Saturday, but this didn't deter people.

Netherfield was in full swing at noon, on the Alphabet Park, with a rodeo bull, inflatable house and a range of stalls offering fun for all the family. There were also a huge number of Queens...! In the week running up to the event, the RA planted 70 sunflowers and then also a tree which was planted as part of this event. Around 150 attendees and nearly £200 raised at the raffle – a phenomenal result.



- Moorlands Party -



- Tinkers Bridge Team Jubilee -

Tinkers Bridge had space inside (with a buffet that looked phenomenal) and outside (with a BBQ too), art, crafts, and a beautifully decorated hall, as well as stalls outside, a raffle and other things. The weather was very much against this event, but nevertheless, the estate (and neighbours) was out in force and had a cracking time.

Beanhill took over the Moorlands Centre with food and flags, fun and festivities including stalls, tombola and another beautifully decorated hall - this was a truly community event that was very well received with hundreds getting involved.

And then there were the smaller events – the households and streets that got together to celebrate, with a few nibbles, the odd lemonade (or two!) and a chance to meet up and enjoy a celebration for the first time in a while.

A huge thank you is due to all the volunteers who enabled these to happen and a huge congratulations to Her Majesty for 70 glorious years.



- Netherfield's Royal! -

Cost of living Support

If you are worried about your finances and how you are going to make ends meet, there is help available. Please find below links to some of the support available to the residents of Milton Keynes.

Help with paying your rent and Council Tax

Housing Benefit and Council Tax Reduction -

Make a new claim for Council Tax Reduction or report a change in circumstances

- www.milton-keynes.gov.uk/benefits

Discretionary Council Tax Reduction Scheme -

MKC funded to provide additional support to those experiencing financial hardship -

www.milton-keynes.gov.uk/council-tax/discretionary-council-tax-reduction-scheme-dctrs



Energy Bills Rebate -

Council Tax Rebate for Council Tax bands A to D -

www.milton-keynes.gov.uk/council-tax/energy-bills-rebate

Discretionary Housing Payments - An additional payment to individuals on Housing Benefit that are struggling to meet a shortfall in their rent - www.milton-keynes.gov.uk/benefits/discretionary-housing-payments-dhp

Help with essential costs including food and energy

Local Welfare Provision -

MKC funded to provide essential support in the event of an emergency -

www.milton-keynes.gov.uk/benefits/what-local-welfare-provision-lwp

Food Bank -

The provision of food, fuel, and small essential items, mostly in partnership with voluntary and charity groups – www.mkfoodbank.org.uk/i-need-help-2

Household Support Fund - Support with food and energy costs -

www.milton-keynes.gov.uk/benefits/household-support-fund

If you need any help applying for any of these, please contact the Woughton Advice Service on **01908 395681**, or email was@woughtoncommunitycouncil.gov.uk



Woughton Community Council



Summer Holiday Activities



25th July – 26th August 2022

Visit www.woughtoncommunitycouncil.gov.uk for updated details on all activities listed in this booklet



Coffee Hall

Beanhill

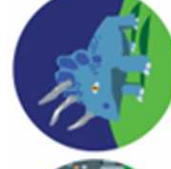
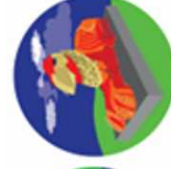
Netherfield

Tinkers Bridge

Eaglestone

Leadenhall

Peartree Bridge



Mondays at The Youth Centre: No95. Jonathans. Coffee Hall 11am-3pm

Summer Fun Camps

1st August

FOREST
SCHOOL



8th August

INFLATABLE
DAY



15th August

CIRCUS
SCHOOL



22nd August

FARM
VISIT



3 Family Days Out on Wednesdays. Coach from No 95. Garraways. Coffee Hall.

Family Fun Days

3rd August

PLAY DAY
FESTIVAL



10th August

BLETCHLEY
PARK



17th August

GULLIVER'S
LAND



Details of what's included & booking instructions for all camps and activities are available in full on our website

Following the success of previous camps,

Phoenix summer nights are back!

Tuesdays 2nd, 9th, 16th & 23rd

3.30-7.30pm at Eaglestone Activity Centre



PHOENIX ARTS

All the Drama, Singing & Dancing.
Musical Theatre & Performance fun.

For ages 7-16yrs

Picnic On The Promenade

Open Access Fun for the whole family

Wednesday 24th August 11am-3pm

On Jed Adderley Park. Netherfield

- * Sand * Inflatables* Sports * Crafts *
- * Showtime Circus * Games *



FREE to all Woughton residents

Watersport Adventure

- * Thursday 4th - Open (group) Canoeing
- * Thursday 11th - Raft Building
- * Thursday 18th - Rafted Canoes
- * Thursday 25th - Paddle boarding

11.30am - 3.30pm

ACTION 4 YOUTH
THE CALDECOTTE
XPERIENCE

SUMMER WEEKS AT A GLANCE. A DETAILED WEEK BY WEEK TIMETABLE IS AVAILABLE ON OUR WEBSITE

MONDAYS	   CAMPS @No95 11AM-3PM 1ST – 22ND AUGUST
TUESDAYS	BEANHILL <i>Woughton Community Council</i>  Tin Man Park 11am - 12.30pm  PHOENIX ARTS  Performing Arts Camps 3.30 - 7.30pm at Eaglestone Activity Centre No95 COFFEE HALL  SENIORS 12-18yrs Healthy Living Project 4.00 - 5.30pm
WEDNESDAYS	  GULLIVER'S <i>Theme Park Resorts</i>  FAMILY FUN  Q alliance. LGBTQ+ youth projects 4.30 - 8.30pm Venue tbc
THURSDAYS	 THE CALDECOTTE XPERIENCE WATER SPORTS 11.30am - 3.30pm on Caldecotte Lake A different activity each week EAGLESTONE <i>Woughton Community Council</i>  Flagpole Green Park 1pm – 2.30pm
FRIDAYS	TINKERS BRIDGE  Charles Warren Academy. School Field 10.30am – 12pm (in partnership with SAPC) <i>Woughton Community Council</i>  NETHERFIELD Jed Adderley Park. Farthing Grove. Netherfield. 1.00 - 2.30pm

PLAY RANGER & YOUTH CLUB SESSIONS DO NOT NEED TO BE BOOKED.

ALL BOOKING INSTRUCTIONS FOR CAMPS, DAYS OUT AND WATER SPORTS SESSIONS ARE DETAILED OVER.



Our Play Ranger sessions are play sessions that happen in an outdoor green space near you.

They are delivered by trained Play & Youth Workers.

Sessions are completely free and run on an open access basis, so children are free to come and go as they please. Children under 8 years need to be supervised by an adult or older sibling.

Some activities may result in children getting wet or muddy. They may climb etc and clothes can tear so we advised to wear older appropriate clothing.

Children are asked to fill out a registration form the first time they attend so we can monitor numbers and have emergency contact details in the unlikely event we should need them.

This Summer we are on:

Beanhill - Tuesdays,
Eaglestone - Thursdays

Charles Warren School & Netherfield - Fridays

Each week has a new theme & different activities.

NO NEED TO BOOK. JUST TURN UP & PLAY!

HOW TO BOOK PLACES ON ACTIVITIES

All our Play Ranger sessions, the senior youth club and the Netherfield Picnic* on the 24th are completely open access: meaning you do not need to book and can just turn up.

Everything else has limited spaces and needs to be booked. *Lunch must be booked

You can go to our website for all the information you need on how to book or call the Youth team on 01908 392945/ 07983 599279 for more information..

www.woughtoncommunitycouncil.gov.uk

Or you can follow the links or QR codes for each activity, e-booking form

The Summer Camp experience days (Mondays @ No95)

<https://forms.office.com/r/xB8fh8PMLT>



The Phoenix Arts performing Arts Camps (Tuesdays EAC)

<https://forms.office.com/r/YnKBTy8rGT>



Family Days Out (Wednesdays)

<https://forms.office.com/r/q0hlt8xQs6>



Caldecotte Watersports (Thursdays) @ Caldecotte Xperience

<https://forms.office.com/r/je5Usm2gAa>



Or you can simply call us and one of our team will assist you in making your booking.

Note- Places are limited and are first come first served, so don't delay.- book today!

Tel: 01908 395681/ 01908 392945/ 07983 599279

E: gemma.simmmons@woughtoncommunitycouncil.gov.uk

www.woughtoncommunitycouncil.gov.uk



Woughton Youth

Dogs Die In Hot Cars



The Great British staycation is here to stay, with up to 30 million Brits expected to holiday in the UK in 2022. And it's likely many of us will be taking our four-legged friends along. But dogs aren't welcome everywhere, so we're urging you to plan your outings carefully. A little forward thinking could save your dogs from heatstroke this summer.

Never leave your dog alone in a car on a warm day. If you see a dog in distress in a hot car, dial 999.

Many people think it's ok to leave their dog in the car if they're parked in the shade or the windows are open. But a car can become as hot as an oven, even when the weather doesn't feel that warm. When it's 22 degrees Celsius outside, the car could reach an unbearable 47 degrees within an hour. It's very dangerous and will cause your dog suffering and harm.

What to do if you see a dog in a car on a warm day
First, assess the dog's condition. If they're showing any signs of heatstroke dial 999 at once.

If the dog's condition is critical, and the police haven't arrived yet, your instinct will be to break into the car to free them. But please be aware that this could be classed as criminal damage. You may need to defend your actions in court, so please be sure you're doing the right thing. Legally, you can commit damage if you

believe the car owner would consent to it if they knew the dog was in danger.

If you're sure you need to free the dog, tell the police what you intend to do and why. Take photos or videos of the dog. Are there any other witnesses? Take their names and telephone numbers.

Don't be afraid to dial 999. If it's an emergency, we may not be able to get to you - and the dog - quickly enough. And as we have no powers of entry, we'd need to ask the police to help us rescue the dog. Don't worry - the police will soon let us know if the dog needs our help.

What do I do once the dog is free?

Check if the dog is showing signs of heatstroke or is in distress. If they are, immediately follow our emergency first aid advice. This could mean the difference between life and death for the dog.

This article was first published by the RSPCA. – we have been asked to share it, but the full article is available at

<https://www.rspca.org.uk/adviceandwelfare/pets/dogs/health/dogsinhotcars>

If you're struggling or worrying about debt or finances, don't keep quiet, get in touch with us now.

The web is full of ideas on how to try and save money. Some are common sense, like turning off lights when you leave a room, or wearing more clothes instead of turning your heating on. Some are ridiculous, like cooking an egg in the kettle.

With prices rising and likely to continue, managing your money might already be causing you real hardship and worry.

We don't have answers to everything, but we can talk through your options and refer on to specialist support if needed. We can even open bills if that is too much for you at the moment. We won't just refer and forget about you, we can keep in touch and make sure you are ok.

There are some contact details below of organisations who might be able to help if you would rather get in touch with them directly.

Whatever situation you find yourself in, deal with it now. Background worry is exhausting and can be overwhelming and the problem will not just go away.

MONEY LIFELINE – 0300 1235 198

Budgeting, money management and debt advice

STEP CHANGE – 0800 138 1111 Debt help and advice

CITIZENS ADVICE BUREAU - 0808 278 7991

SCOPE – 0808 800 3333

advice and support for disabled people and their families

AGE UK DEBT ADVICE -

www.ageuk.org.uk/information-advice/money-legal/debt-savings/debt-advice/

National Debtline -

<https://tools.nationaldebtline.org/dat-reg>

MONEY HELPER -

<https://www.moneyhelper.org.uk/en>



And of course, you can always speak to us at the Woughton Advice Service on **01908 395681** or **was@woughtoncommunitycouncil.gov.uk**



In May, Woughton presented its first Open Mic evening. Hosted by our multi-talented volunteer Jerry, the inaugural event showcased a wide variety of music, poetry and poetry performed by Woughton residents, and even attracted a few performers from further afield.

If you've never experienced Open Mics before, they are a little like a talent show, except that there are no winners or losers. Rather, everyone who takes part is considered a winner, as it's all about getting up and expressing yourself in front of a friendly audience.

If you ever thought you had a song to sing, or a story to tell, Open Mics are a great environment to try it out. There's no judgement, no egos, just applause and encouragement.

We will be taking the Open Mic on tour around the parish this summer, so why not come along and tell us a story or poem, sing a song or just sit back and enjoy the show.

Ambassador's Column



As Woughton Ambassador, I would firstly like to thank all those volunteers who helped make the Queens Platinum Jubilee a great event. Spread over several days and locations throughout Woughton, the events were all brilliant and all those volunteers and organisers should be very proud of what they have achieved.

The events which I visited were all a bit different, but all were well received by residents and visitors and, from what I saw, very well attended. It was good to see people enjoying themselves (especially with things the way they are) and it was good to visit fellow councillors on their own turf and see what they do. It took many people and many donations to help bring these events and without these donations many of our Resident Associations would struggle. Again, a massive thanks to all volunteers and of course WCC for spreading themselves out to help all our estates

Beanhill 'Tin Man' statue

I have been looking at the situation with the Tin Man and, after several complaints about continuing vandalism, I have decided to open a public discussion about what we should do regarding him and his future.

One suggestion is to move him from his current location in the park to a place where he will stand out and be seen by all who come in to Beanhill, with a location geared around the Tin Man with a new garden area created.

I have been in touch with the grandson of the artist of 'Tin Man' and at time of writing I am awaiting



on him visiting Beanhill to have a chat about this relocation and whether he would support it. I believe this is the best solution to safeguard the statue for the future and being at the new location and partly maintained garden around him by the local school it will make them all aware of who he is and why we as Beanies look after him.

The idea at present would mean he is built into a concrete plinth and surrounded but a garden with a yellow path from it leading to the school and the children will have opportunity to put their handprints in the laying of the path.

This is of course if you, the Beanies, decide this is better for him. I would suggest that if he remains where is it will eventually get to the stage that he is damaged beyond repair or considered dangerous to do this.

**I welcome any feedback
so please email me on:**

**brian.hepburn@
woughtoncommunitycouncil.gov.uk**



Rats, rats and more rats....



There's an old saying that you are never more than 6 feet from a rat and whilst this is probably not true, there are certainly plenty of them around.

Many of us will have seen them in the bushes, running near shops or factories and for some, in their gardens or homes. There is lots of discussion about this – how can we control them? Who should I contact? What can I do about them?

There isn't a simple answer – rats will go where there is food and shelter, much the same as most animals. And with the way that household waste is managed in Milton Keynes, there is often a ready supply each week when bags are put out. This, as well as the litter that is dropped, the food packaging and takeaway containers and the large amounts of hedgerows and bushes that provide cover means that in some places, there is a very welcome home for rats.

Despite this, there are things coming that should help – wheelie bins that are being introduced in 2023 will make it easier to store household waste and reduce the amount of food available. But in the meantime, what should you do to try and keep your home free from the pests?

Seal up your home

Close up all holes along your exterior using recommended rodent-proofing materials. Pay particular attention to doors, windows, and vents.

Clean up that garden

Remove piles of debris, clutter, and rubbish from around your gardens. Plant shrubs and bushes at least 3 feet from buildings. These spaces provide safe habitats for rodents.

Remove outdoor food sources

Gardens and fruit trees can be a real draw for rodents.

If you have fruit trees, regularly remove dropped fruit from the ground. Keep the tree pruned to prevent hiding spots for rodents. Apply a rat guard to your trees by securing a piece of sheet metal 2 feet high around your tree's trunk. In the garden, keep it free of rotting food and hiding places. Consider whether the bird feeder is the best option – any food that falls will be a lovely snack for a rat.

Eliminate outdoor access

Trim back overhanging trees that enable rodents to hop onto your roof. Also, keeping your trees properly pruned gives rodents one less place to hide from predators.

Practice cleanliness in and around your home. If rodents don't have food, they certainly have no reason to want to invade your home. Don't leave food sitting out in and around your home. Make sure rubbish bags and pet food are securely contained in rodent-proof bins.

Invest in mint

Both rats and mice avoid the scent of mint. Plant mint outside in your garden and rub peppermint oil indoors along attic beams and other areas where you've experienced rodent problems. Even leaving some dried mint leaves can help.

It is also important to get rid of any pests as soon as possible – the longer they are there, the more settled they get. There are lots of companies that can help, but if you are a council tenant there is a company that offers 'special rates' – check <https://www.milton-keynes.gov.uk/environmental-health/animals-and-pests/pest-control> for more information.

Parking within the Parish



A challenge that isn't going away.

Parking is an issue that we hear about more than most – certainly in the top 10 issues for residents across the parish. With schools, large events at the stadium (used to be the Bowl!) and larger venues that have lots of visitors, like the Islamic Centre and the hospital, there are times where there are more cars than spaces and this can cause real frustration.

There are also times where people parking inconsiderately leads to difficulties – parking on or near zebra crossings, on hatching outside schools, on verges causing damage or where vehicles reduce visibility for other road users. These are all things that we see and hear about almost every day.

But things are unlikely to change unless we do something differently. **So your ideas and views are really important.** What could we do to reduce these problems? How can we make the parish safer for everyone using the roads and paths? How can we try and make sure that buses and emergency services are able to get to where they need to be? How can we make sure that the limited space is used in the best way possible?

Some ideas have been mentioned, and we would like to know your views on these:

○ **Walking buses to schools.** This is where groups of children travel together from a place away from the school, reducing pressures on the immediate area. Usually, this would be a short walk away (5 minutes' walk) and then some trusted adults would supervise the group walking to the school.

○ **Parking permits.** This is a controversial idea, as it means that residents must have a permit to park on the roads outside their own houses, which would cost £25+ for each permit. This would also have to be supported by a majority of people.

○ **Yellow lines / parking**

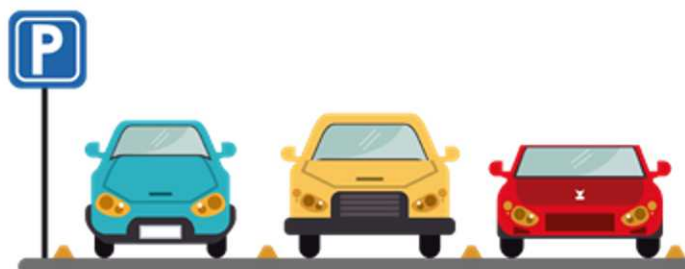
restrictions. As with the permits, this means that restrictions are there for everyone – for some, this might be fine, but in other areas it tends to be visitors that come occasionally (for concerts or events) that are the bigger issue. Is it worth stopping everyone from parking, just to avoid a problem 3 or 4 times a year?

○ **A 'friendly parking' scheme,** where residents who have a space that they don't use can allow others to use it. This might be, for example, a house near a local school where a teacher could park during the day. Or a space near the Islamic Centre that isn't used on Fridays, during prayers to enable a worshiper to park safely.

It may be that there are other things that you would like to see – we will, of course, continue to work with MKC to investigate more parking, better management of parking issues and longer-term solutions. We are also talking with schools, hospitals, and venues about how we can work together to manage these issues. Any ideas would be welcome.

You can visit our questionnaire at
<https://www.surveymonkey.co.uk/r/L32DTQX>

(or via the website / social media links) and let us know your thoughts, register your interest, or give us your feedback.



WOUGHTON COMMUNITY COUNCIL
WOUGHTON COMMUNITY COUNCIL HUB |
THE LOCAL CENTRE | GARRAWAYS | COFFEE HALL |
MILTON KEYNES | MK6 5EG

TEL: 01908 395681

EMAIL: reception@woughtoncommunitycouncil.gov.uk

Leadenhall

Vacancy to be filled 7th July

Eaglestone



Pam Wilson
01908 395681
pam.wilson@



Luke Louis
07434 658225
luke.louis@



Jordan Coventry
07340 308181
jordan.coventry@



Liz Simpkins
07768 288993
liz.simpkins@

* All email addresses are as follows:
firstname.surname@woughtoncommunitycouncil.gov.uk

Coffee Hall



Philip Hopcraft
07956 809969
philip.hopcraft@



Donna Fuller
077925 237282
donna.fuller@



Lauren Townsend
07599 886744
lauren.townsend@



Nick Scott
01908 606669
nick.scott@

OPENING HOURS:

Mon / Tues / Thurs - 9am-5pm
Friday - 9am - 4pm
Weds - 9am - 12pm

please check website due to
Covid 19 restrictions



Leadenhall

Coffee Hall



Bleak Hall



Redmoor



Beanhill



Netherfield



Tinkers Bridge



Eaglestone



Peartree Bridge



Ruth McMillan
07999 661632
ruth.mcmillan@



Sue Smith
01908 476043
sue.smith@



John Orr
07565 922368
johnorr@

Netherfield



Janette Bobey
07951 117905
janette.bobey@



Terri Parish
07780 373322
terri.parish@



Elina Apse
07722 466796
elina.apse@



Maggie Ferguson
07703 619574
maggie.ferguson@

Beanhill



Amber McQuillan
07495 301358
amber.mcquillan@



Brian Hepburn
07790 555593
brian.hepburn@



Alan Williamson
01908 234821
alan.williamson@