

Woughton Community Council Newsletter

MY WUGHTON Gazette

AUTUMN EDITION

NOVEMBER 2022



Beanhill



Coffee Hall



Eaglestone



Leadenhall



Netherfield



Peartree
Bridge



Tinkers
Bridge

08
Dates of Council Meetings

09-12
Cost of Living Pull Out

18
Upcoming Events

The official source of parish news and
information to residents of Woughton

WOUGHTON COMMUNITY COUNCIL | WOUGHTON COMMUNITY COUNCIL HUB |
THE LOCAL CENTRE | GARRAWAYS | COFFEE HALL | MILTON KEYNES | MK6 5EG

TEL: 01908 395681 | EMAIL: reception@woughtoncommunitycouncil.gov.uk
OPENING HOURS: Mon / Tues / Thurs = 9am - 5pm | Friday = 9am - 4pm Weds = 9am - 12pm



BOXING CLUB

AT EAGLESTONE
ACTIVITY
CENTRE

EVERY MONDAY
+ THURSDAY



JUNIORS (UNDER 13) 6.30 - 7.30PM £2.50

SENIORS (OVER 13) 7.30 - 9.00PM £3.50

MORE INFO CONTACT: ALLAN 07538 191 837

MK ACADEMY AMATEUR BOXING CLUB



WOUGHTON LIBRARY

You'll find us at: Unit 6, Farthing Enterprise Centre,
Farthing Grove, Netherfield MK6 4JH

See what your local library has to offer

It's free to join and borrow books
Free eBooks, eAudiobooks and eMagazines
Job Club – Thursday 10am to 12pm
Lego Club – Saturday 10.30-11.30am
Free Wi-Fi

OPENING HOURS

Tuesday – 10am to 2pm

Thursday – 1pm to 5pm

Saturday – 10am to 1pm

Visit the website for information about all the services we
offer across all ten Milton Keynes Libraries.

www.milton-keynes.gov.uk/libraries

**MK Milton Keynes
City Council**

CHILDRENS REMEMBRANCE PARADE

FRIDAY 11TH NOVEMBER

10.00 AM

COFFEE HALL

MK6 5EG

FOR MORE INFORMATION PLEASE
CONTACT ANDY 01908 663373 OR
EMAIL: ATOMLINSONSMITH@GMAIL.COM



S.H.O.U.T!

SINGING HELPS OTHERS UNITE TOGETHER!



Community Music Making

Every Wednesday 12.15 until 13.30

Moorlands Family Centre, Beanhill, MK6 4LP



Leadenhall Residents Association Meeting

**SAT 12 NOV
5.00 - 6.30PM**

MILTON KEYNES ACADEMY
LEADENHALL
MILTON KEYNES
MK6 5LA

WANT TO
MAKE A
DIFFERENCE?
WE NEED YOU!



LEADENHALL RESIDENTS ASSOCIATION Presents:

[Find us on Facebook!](https://www.facebook.com/LeadenhallResidentsAssociation/)

SANTAS GROTTO

Friday 16th December

4.30 - 5.45pm @ MK ACADEMY

Fulwoods Drive
MK6 5LA



FREE EVENT Registration is essential

Please book via Eventbrite:
www.eventbrite.co.uk/e/4387164577

Words from the Chair

It's Gazette time again - it comes around faster and faster.

Where do I start...

With uncertain times politically, energy prices soaring and hints of a bad winter, with potential of blackouts, we have not been in this situation since the war.



Please remember we are holding **'Games Night'** fortnightly, where you can come along to the Community Centre on Coffee Hall, stay warm using our heating and have a few games with friends and neighbours.

There are lots of other events that you can attend - look through the Gazette or check the weekly update, Fridays on Facebook.



Advice Service

Please remember that there is the advice service, that you can access, for support and information regarding benefits, housing, and anything else that is troubling you. Don't let your debts get out of hand before coming to us, as the earlier we can intervene, the easier it is to sort. **Ward Councillors can be found in the Café every Tuesday and Thursday, 11-2.**

The Councillors and staff really do care about our residents, and if you can fill out one of the priority surveys that would be really useful to let us know what is important to you, rather than us second guessing. With Budget restraints we may have to prioritise services.



Look out for **Christmas events** details, Santa visits and Christmas Fayres.

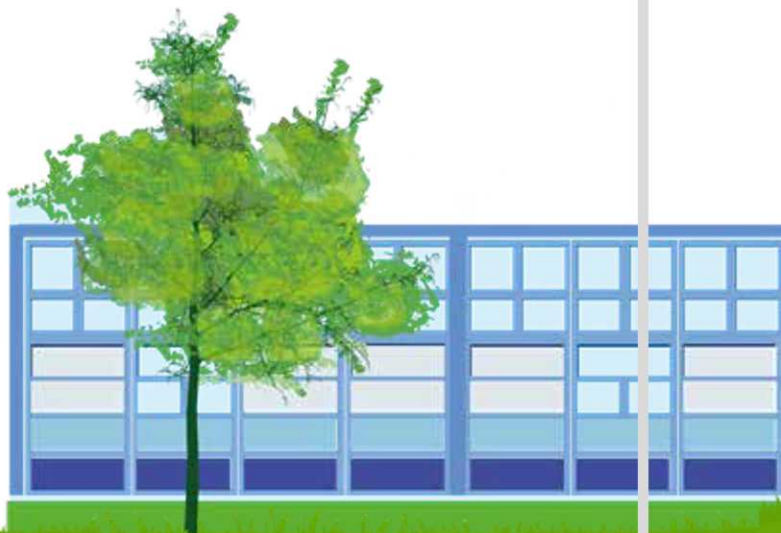
Leaves are becoming a problem on estates and MKC should soon be coming along and clearing these.

Please report any blocked drains online.

On a happier subject, please have a lovely festive time. You don't have to spend a fortune - spending time with friends and family is priceless, as we all remember through lockdown.

It just leaves me to say take care and have a lovely family time. If you need us, please don't hesitate to contact us.

Sue Smith



SANTA SLEIGH TOUR 2022*

Thur 15th December

Beanhill 5pm

Netherfield 6pm

Pear tree Bridge 7pm

Friday 16th Dec

Leadenhall 6pm

Eaglestone 7pm

Sat 17th Dec

Coffee Hall 2pm

Tinkers Bridge 4pm

*Please note times are approximate and may vary




Creating Connections. Supporting Communities
Woughton Community Council

Care about where you live? Want to improve things?
Looking for a new challenge?

***BECOME A WOUGHTON
COUNCILLOR!***

To find out more about how to apply please contact

01908 395 681 or visit our website:

woughtoncommunitycouncil.gov.uk/council-information/become-a-councillor/



JOIN US!



Community Centre Improvement works

WCC owns or manages 4 community centres, as well as the Council Hub and No 95 (Youth Centre).

The community centres (also known as 'Meeting Places') are:

Tinkers Bridge Meeting Place

at the local centre on Marshworth

Netherfield Meeting Place

between Farmborough and Beadlemead

Coffee Hall Meeting Place,

next to the Hub at the local centre

Eaglestone Activity Centre,

at Harrier Court where the shops are

These spaces are all a bit different, and some centres have other spaces too – Netherfield has an office, Eaglestone has a small meeting room and a squash court, Tinkers Bridge has a lovely courtyard garden – different spaces are good for different things.

These centres are all approaching 50 years old and in some cases, are looking it! To try and bring things up to standard, WCC is investigating the costs of refurbishment so that funding can be sought to make these changes. This work includes making the centres fully accessible for people with disabilities, improving the facilities, replacing damaged areas and upgrading utilities to make them more energy efficient (especially important during these times of high energy costs).

We would LOVE to see local tradespeople involved in this work and would welcome contact from anyone who may be able to quote for some, or all the works needed. If this is something that would be of interest, please contact us and we can provide a full breakdown of the works needed.

Contact us
for more
information

reception@woughtoncommunitycouncil.gov.uk

or phone us on **01908 395681**



What happens to my recycling?



Items put in your recycling bins are collected by our trucks and taken to Old Wolverton.



From here, it is sent to a **Recycling Facility** where machinery and staff sort and separate the paper, metal cans and plastic bottles, etc.



Then it is squashed into cubes, called bales, ready for transportation to factories to be **made into new recycled products**.



Paper is recycled into more newspaper, toilet rolls, tissues & egg boxes. Paper can be recycled 5 or 6 times before the fibres become too weak to be recycled. Its last life will be as a tissue.



Steel and aluminium cans are sent to furnaces where they are melted down and recycled to create another can. They are back on the supermarket shelf with new food or fizz inside in about 6 weeks!



Plastic is first flaked, then washed, dried and melted. Plastic bottles can be recycled into more bottles, traffic cones, wheelie bins, guttering, fluff in duvets, etc. Plastic food tubs, yoghurt pots, etc. can be recycled into a plastic board to be turned into products such as picnic tables or pig sties!



Food and garden waste is sent to a composting facility where it is turned into a compostlike soil for agriculture.

Why do we recycle?

Fill in the missing words:

jobs	pollution
water	reduce
trees	new
home	buy

1. Helps our environment

Recycling and not littering helps to reduce _____ of water ways, streams and oceans.

2. Saves natural resources

Recycling paper means we don't have to cut down more _____ to make new paper. Recycling metal food and drinks cans reduces the amount of mining to dig up new metals. Recycling plastic means we use up less crude oil to make new plastic bottles and tubs.

3. It creates jobs

Recycling means there are _____ for workers, drivers, designers, engineers and more.

4. Creates new products

Recycling creates new products for us to _____ and recycle again and again.

5. Saves energy

Recycling saves energy and _____ when compared to creating brand new products.

6. It shows we care

Recycling at _____ and school shows that we care for the environment, nature and where we live.



Woughton Community Council Meetings



Woughton Community Council (WCC) is made up of 19 elected councillors who represent the seven residential and two industrial estates in the parish

– you can find them all on the back cover.

They do this through loads of different ways – holding councillor surgeries, working on residents' problems, taking on 'special tasks' or areas to focus on and, most regularly, by attending, talking and making decisions at the council meetings that happen every month.

There are four regular meetings:

Full Council

This is the big one, where all big decisions are made. All other committees (see below) report to Full Council and this meeting includes ALL councillors. This meeting takes place on the second Monday of each month (except August).

14th November	13th February
12th December	13th March
9th January	10th April

Operations and Resources Committee

This committee covers most of the 'management' stuff – finances, budgets, policies, staffing. It ensures that the council complies with legal obligations and works to improve the way the council works. This committee has 8 members and meets on the third Monday of every month (except August)

21st November	20th February
19th December	20th March
16th January	17th April

Services and Communities Committee

This oversees all the services that the council provides, making suggestions for what else could happen and

checking to make sure they are doing what they should. This committee also oversees the grants scheme – checking applications and deciding where the money should be spent. With 10 members, this committee is on the third Wednesday of every month (except August).

23rd November	22nd February
21st December	22nd March
18th January	19th April

Planning, Licensing and Development Committee

This group of 8 (with deputies where possible) covers all planning and licensing applications, checking that they are suitable and that they comply with the Neighbourhood Plan. They also look at other policies and plans around the 'open spaces' of the parish. They meet on the first Monday of the month.

7th November	6th February
5th December	6th March
3rd January*	3rd April

**Please note 3rd Jan as 2nd is a holiday*

All meetings are held within the Council Chamber at the **WCC Hub**, starting at **6.30pm** (with doors open from about 6pm). Meetings are governed by both the 'Standing Orders' (the council rule book) and the Terms of Reference for the individual meetings – you can find all these in 'Official Documents' on the website.

Meetings are streamed live to Facebook, but members of the public can also attend either in person or via video link to ask questions – there is a slot in every meeting dedicated to public questions.

If you have any questions, queries or comments, please do not hesitate to get in touch.

Cost of Living Emergency Declared – Help, support and Advice



Some of you will have seen that in September, WCC declared a '**Cost of Living Emergency**'. This statement, which was supported by ALL councillors in attendance, was explicit in saying that WCC is extremely concerned about the impact of the current pressures on people in the parish. Many in Woughton are already pushed to make ends meet and prices going up mean that this is even tougher.

The statement was sent round to MP's and media outlets and was picked up by Look East, who came and filmed some residents speaking about the pressures. Sadly, at this point, we have not heard anything from either of the MP's that cover the city.

Since WCC made this declaration, Milton Keynes City Council (MKCC) have also declared similar. They join councils across the country in saying that extra support **MUST** be provided to those most in need, to ensure that people aren't cold, hungry, or homeless.

Within this 'PULL OUT', there is information about places that can offer support, information from MKCC and details of the Woughton services that may be able to help.

THERE IS HELP AVAILABLE. Please don't leave things too late –
if things are getting tricky, please do seek support.

We are also eager to hear your views on what might help, so please do have a look at the **Cost of Living Survey** and let us know what would be useful over the coming year.

COST OF LIVING SURVEY - HOW CAN WE HELP YOU?

As a result of rising prices on many essentials such as energy, fuel, and food costs the country is facing a cost of living crisis. To ensure we are addressing the needs of our community we would like your feedback on how we can help through this upcoming difficult period. The results of this survey will help us to draft a budget for next year that prioritises the needs of our residents.

There are certain things within our remit that we may be able to invest and assist with, although you should be aware we may not be able to fulfil every suggestion, some requests may be the responsibility of our Unitary authority, or another service provider.

We also may face budget cuts from the Government in the upcoming years and the situation is uncertain. However we are determined to provide a budget that is relevant and robust enough for our community to receive the help that they need.

YOUR FEEDBACK will be used when reviewing our current budget at our mid-year review in October and for drafting our budget for 2023/24 (April 2023 onwards). You can find paper copies of the survey at our cafes, fridges and events as well as at our offices. If you would like us to send you one, please get in touch.

THE EASIEST WAY TO PROVIDE FEEDBACK IS VIA THE ONLINE SURVEY - only seven questions and a few minutes to complete. You can access and submit your survey online by following this link:

<https://www.surveymonkey.co.uk/r/WCCcostofliving>



SCAN ME



Woughton offers a whole range of support to help people, which has been up and running for a number of years.

Cost of Living – How we're helping local people



FINANCIAL SUPPORT

We're providing cost of living financial support to local residents through a number of schemes, funded through a mixture of Central Government funding and our local funding.

For instance:

- **Energy Bills Rebate** £150 cash grant for every Council tax Band A to D home.
- **Energy bills discretionary funding** £503K for people in bands other than A to D.
- Household Support Fund £1.792M for food, energy, household costs and other essentials.

PRACTICAL PLANS

We're developing practical plans to support people, and working with key stakeholders such as charities, parish councils and wider agencies.

For instance:

- **Energy Advice and Support helpline** - available to all residents in time for winter (some vulnerable people to be contacted proactively) allowing us to refer people with intensive needs for further help about potential grants/energy efficiency funding.
- **Home energy reviews and advice** a targeted street-by-street community approach to assist residents' understanding of what could improve the energy efficiency of their property.
- **Energy drop-ins** involving multiple agencies who support residents with cost-of-living pressures.
- **An easy-to-use online portal** to allocate crisis support in the form of vouchers for food, fuel, and essential living item.

We will be providing funding to partners and parishes for specific schemes that swiftly deliver practical benefits to local communities. These will be announced in the weeks ahead.

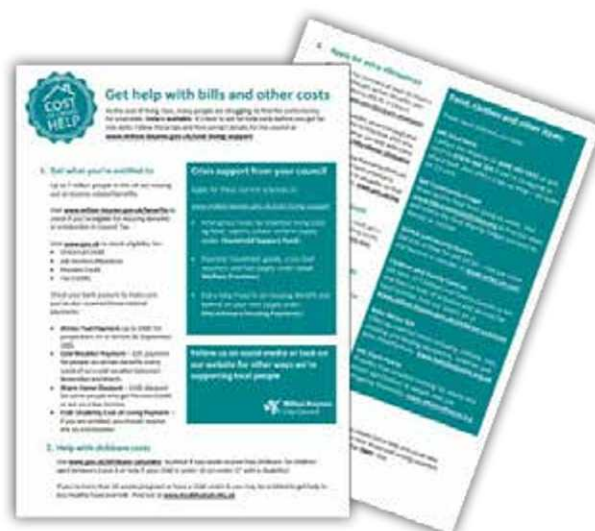
ADVICE AND SIGNPOSTING

We've run drop-in sessions for local people so they can understand what benefits and other help they are entitled to.

We're signposting help at a dedicated cost of living help page, and also are promoting a helpsheet (pictured, and on our website) which suggests resources that people might not know they are entitled to, such as Healthy Start Funding to buy food and milk for young children. It also lists local organisations such as MK FoodBank and our own Children and Families Centres who provide crisis support.

WHAT ELSE IS HAPPENING LOCALLY?

Milton Keynes Community Foundation has launched an emergency fundraising appeal to help with the relief of energy price increases, food poverty and other associated costs.



Donations made will go into a fund to enable community groups to continue their vital work across the city, helping those who have been affected most by the crisis.

Find out more at: <https://mkcommunityfoundation.enthouse.com/cf/mk-cost-of-living-crisis-appeal>

As the cost of living rises, many people are struggling to find the extra money for essentials. Help is available. It's best to ask for help early before you get far into debt. Follow these tips and find contact details for the council at

www.milton-keynes.gov.uk/cost-living-support

1.

GET WHAT YOU'RE ENTITLED TO

Up to 7 million people in the UK are missing out on income-related benefits.

Visit www.milton-keynes.gov.uk/benefits to check if you're eligible for Housing Benefits or a reduction in Council Tax.

Visit www.gov.uk to check eligibility for:

- Universal Credit
- Job Seekers Allowance
- Pension Credit
- Tax Credits

Check your bank account to make sure you've also received these national payments:

- **Winter Fuel Payment** up to £300 for people born on or before 26 September 1955.
- **Cold Weather Payment** – £25 payment for people on certain benefits every week of very cold weather between November and March.
- **Warm Home Discount** – £140 discount for some people who get Pension Credit or are on a low-income.
- **£150 Disability Cost-of-Living Payment** – if you are entitled, you should receive this by end October

2.

HELP WITH CHILDCARE COSTS

Use www.gov.uk/childcare-calculator to check if you could receive free childcare for children aged between 2 and 4 or help if your child is under 16 (or under 17 with a disability).

If you're more than 10 weeks pregnant or have a child under 4, you may be entitled to get help to buy healthy food and milk. Find out at www.healthystart.nhs.uk

3.

APPLY FOR EXTRA ALLOWANCES

If you care for someone at least 35 hours a week, and they get certain benefits, you may be entitled to £69.70 in Carer's Allowance.

www.gov.uk/carers-allowance

If you have a disability severe enough that you need someone to help look after you, Attendance Allowance can help with extra costs. www.gov.uk/attendance-allowance

Personal Independence Payments (PIP) can help if you have a long-term physical or mental health condition or disability or find it hard to do certain tasks. www.gov.uk/pip

5.

TALK TO YOUR ENERGY SUPPLIER

Many energy companies offer help schemes and you don't always need to be their customer. Ask about being put on your suppliers' Priority Services Register, a free energy support service if you are vulnerable.

www.ofgem.gov.uk/information-consumers/energy-advice-households has a list of help schemes, as well as energy saving tips. charisgrants.com and turn2us.org.uk list current fuel grants.

4.

GET A WATER BILL DISCOUNT

If you're on a low income you could get a discount of up to 50% by switching tariffs.

www.anglianwater.co.uk/account-and-bill/tariffs-and-charges/lite/

NEED SOMEONE ON YOUR SIDE?

If you're in a vulnerable situation, someone at the Citizens Advice Extra Help Unit could take on your case.

The Citizens Advice Energy Help Unit will also raise issues with energy suppliers.

Call **0808 223 1133** or use online webchat. For textphone, dial **18001** first.

CRISIS SUPPORT FROM YOUR COUNCIL

Apply for these current schemes at:

www.milton-keynes.gov.uk/cost-living-support

- Emergency funds for essential living costs eg food, repairs, school uniform (apply under Household Support Fund)
- Essential household goods, crisis food vouchers and fuel (apply under Local Welfare Provision)
- Extra help if you're on Housing Benefit and behind on your rent (apply under Discretionary Housing Payments)

FOOD, CLOTHES AND OTHER ITEMS

These local schemes can help:

MK FOOD BANK

Contact the helpline on 0300 303 4933 or text HELP to 07874 964 505 if you're struggling to afford food. Also offers a top up shop – 10 items for £2 cash.

MK COMMUNITY FRIDGE

Saves quality food from going to waste. Visit www.mkcommunityfridge.org to find out when and where the food sharing fridges are open to donate or receive.

SOFEA COMMUNITY LARDERS

Get £15 of food for just £3.50 – find out more and become a member at www.sofea.uk.com

CHILDREN AND FAMILY CENTRES

We have 17 Children and Family Centres in MK and they're hubs of activities and services for local families. Find out what's on at www.milton-keynes.gov.uk/children-s-centres

BABY BASICS MK

Offering essential items including clothing, toys, sleeping and feeding equipment, toiletries and baby food/formula. www.babybasicsmk.org.uk

MK STORE HOUSE

Provides free donated clothing for adults and school age children to people who are struggling financially. www.mkstorehouse.org

Follow us on social media or look on our website for other ways we're supporting local people



WCC – SUPPORT



THE WOUGHTON ADVICE SERVICE provides initial help and support to people who may need a hand getting things sorted. **Money, housing, work, neighbour issues** – the range of different problems that people come with is huge and if we can't help, we usually know someone who can!

With sessions at both Hedgerows and Moorlands Family Centres, the Wellbeing Room at Coffee Hall and bookable appointments either in person or online, there are loads of ways that you can access help with the Woughton Advice Service. **GET IN TOUCH:** was@woughtoncommunitycouncil.gov.uk

The advice service works alongside the **WELLBEING SUPPORT**, a dedicated officer who can offer advice and support to help ensure positive mental health and wellbeing. Sometimes, things can get difficult and having someone who you can talk to, who knows 'the system' and can help navigate you through to the help you need can really make a difference. And with technology, this can be online if this is easier, meaning you don't have to suffer alone.

Our **COMMUNITY FOOD** includes the fridge, larder and café, alongside the food within our youth services. Whilst these services are all a bit different, they can all play a part in making sure nobody is hungry.

THE COMMUNITY FRIDGE is there to reduce food waste. Food suppliers, supermarkets and local producers give things that would otherwise go to waste, and this is then offered to anyone who can use them. This isn't a 'Food Bank', but a project that is open to everyone.

THE COMMUNITY LARDER is a scheme run by SOFEA, a charity, that offers a 'subscription' service for food items – there is a weekly fee, which then means members can take 10 items, plus fruit, veg (and often bakery products).

THE COMMUNITY CAFÉ uses some of the donated food from the fridge and creates cooked meals within the community centre. This is a great social space too, with other activities that take place around the food – advice and information, activities such as crafts and quizzes and somewhere to sit and have a chat. There are usually councillors there too, who can often help with queries.

TINKER BRIDGE RESIDENTS ASSOCIATION also offers a Community Larder and there is also one at Moorlands Family Centre.

EAGLESTONE RESIDENTS ASSOCIATION, along with the Abba Farther group, hold a Community Café on a Wednesday afternoon at Eaglestone Activity Centre and other areas are investigating to see whether they can also offer things.

These projects are the ones here in Woughton, but there are community fridges and larders across the city, which can be accessed by all.

We are also looking at whether we can use our community buildings as 'warm spaces', whether we should expand our cafes to other areas.

Eaglestone Ward Councillor's Allowance



Every year each Woughton Community Council councillors are given an £200 to spend on projects within the community. This year, as I had not received any requests for money, I decided to donate my £200 to the Woughton youth service.

There are several groups run on Eaglestone:

Eaglestone Juniors,
Eaglestone Senior Youth Club,
Little dancers, Ballet, Tap and Contemporary,
STREETS dance class,
Phoenix Arts

The money will be used to buy equipment for the Eaglestone projects: Games console, beanbags, kitchen, and dance equipment.

If you want to know more about these groups, you can contact them either by telephone, **01908 392945**, or via the Facebook page **Woughton Youth**.

Eaglestone Community Cafe

I have been going to The Eaglestone Community Cafe 2 or 3 times a month, to enjoy a cup of tea, piece of cake and catch up with my old neighbours and friends. It has also been a place where I can talk to residents and have helped solve a couple of issues which have come to light. The cafe is run by the Eaglestone Residents Association and is on **every Wednesday** from **3.30pm to 6.00pm** at the Eaglestone Activity Centre. There is also surplus food to take away.

Cllr Liz Simpkins



Jonathans Court

(Opposite community centre – coffee Hall)

Christmas Bazaar

Saturday 5th November

2 – 4pm

**Christmas Stalls, Cakes,
Tombola, Raffle, craft stall,
Refreshments
& lots more
All welcome**

Join our fostering community



We're looking for local families to foster MK children and we can help you every step of the way.

We offer competitive rates of pay, training, supervision and 24/7 support, plus access to the Fostering Network and local groups.

If you're over 21 and can offer a safe, happy and supportive home to a child or young person, please get in touch.

www.milton-keynes.gov.uk/fostering

01908 253 206



**Milton Keynes
City Council**

Ambassador's Column

As Ambassador for Woughton Community Council this year, I have felt honoured. It's a role given to encourage promoting not only the parish but helping promote well being within our communities.

This year has brought us many challenges but from my point of view our parish has dealt with and continues to deal with all challenges with enthusiasm and community spirit.

There have been a huge number of events this year coming out of lockdown and its great to see the children thrive on excitement and show us adults that we can still enjoy things and move on even after some really devastating times.

I have visited many estates and many events, and I have to say there has been nowhere else that I have been in my life that holds so many events and organisations such as the residents' groups and community centres along with loads of volunteers ensures that these have all went on and been all well attended.

The people who give their time and money to help others is humbling those who think of the ideas the plan and execute them often taking weeks if not months of planning to have the special day. I want to thank them all from the bottom of my heart these are the people that really hold the estates together and we should all remember to thank those that do when we can.

Looking forward, we have Christmas coming up and obviously we are all well aware of financial concerns that will hit us all this winter and as you know Woughton Community Council is doing all they can to help you all through these times. But we need your help to make sure that everyone in our community is looked after. I personally hope that we remember every single person - we should



take a few minutes chat to our neighbours listen to them and if you feel they need help let someone know. It's very often the case people are too proud to ask for themselves. It may be the case you feel that they may not want others to know but you can do this anonymously. The main thing here is if you see people struggle, for example no power, lights, or heating or lack of food, please let us know. Christmas they say, is a time for giving. If that is the case give your time and effort in to ensuring that our community is supporting each other the best way we can.

I know this year that the residents' groups will be planning events, and this is great so make sure you tell others if they haven't heard and encourage people to come to these events. Christmas is also a time for family and fun but consider those that don't have family, that don't have fun. Maybe by encouraging them, you are giving them what they may not have had for a while.





We have a huge issue of food and at Christmas we tend to go overboard and in many cases waste food so please take time to look at what you have and maybe give a piece to others to help them provide some good old Christmas spirit to others that have little.

I know that WCC along with their staff and councillors will be doing all they can this Christmas to help people but remember this is not just Christmas. This winter will be a major challenge and I am asking you all to help WCC and our groups to make sure people are not forgotten about that people can have at least the basics.

Thanks, and all the best to each one of you.

Tin Man Restoration

I would like to give you all a update on the current situation with the restoration of the 'Tin Man' statue on Beanhill. This has gone well even with days that have delayed works due to weather (too hot, too wet) but it's being done.

Mears have had their team out, including Jordan, a chap who has given his all and is determined to fix Tin Man's nose kept at it even when it struggled to take a hold). He came back time after time to build it up and to give him that nose. He lost the original a while back due to vandals.

The Tin Man has also had parts of his metal structure fixed and now just waiting to be painted which will be done hopefully soon.

The park area around him is also down for a makeover and was supposed to be done end September by volunteers from Tesco who have also donated all the paint. Sadly due to bad weather, they had to cancel that day. Watch this space for further updates. The MK Citizen picked up about what was being done and ran an article and has offered to do a follow up when work is completed, and I am hoping that I can get a team photo of those that have helped bring Tin Man back to life.

I do hope that by doing this work we can all try to discuss with our children what Tin Man is why he is there and the reason for him. This may help stop the needless vandalism and I for one really appreciate how others (not even from our estate) have taken some time out to help him and bring him back to a good condition for all of us. I would like to thank them all on your behalf.

There will be a series of events running from Tin Man Park and I am hoping that he can remain another 40 years so please help us be looking after him. There are some other works hopefully being carried out around him but will keep you updated about them.

Christmas lights on Beanhill and Charity

Every year on Beanhill there are many demonstrations of Christmas lights those that go above and beyond. The light shows they provide are welcomed by many and I love going around the estate being nosey and checking them out. Some are just for fun, but some light shows are there to ask for help and they raise money for a causes close to their hearts and any donations you can give I know are well received. This year we know the cost of running these - may be too much for some so taking your children round some who will still do these maybe a great idea and I'm sure you will be welcomed





Hedgerows Family Centre Programme

Services and support for families and the community

Open Monday to Friday from 8.00am

Hedgerows Reach Area:

Ashland, Browns Wood, Caldecotte, Eaglestone, Netherfield, Old Farm Park, Peartree Bridge, Simpson, Tinkers Bridge, Walnut Tree, Walton, Walton Park, Wavendon Gate

www.milton-keynes.gov.uk/childrens-centre

Tel: 01908 239000



Sessions for parent/carers and children

Monday

Stay and Play	A fun filled session with story and song time, creative and physical activities and learning through play for young children and babies. Our team will be sharing ideas and information about young children's development and play.	10.00am - 11.30am
Little Talkers NEW	A fun filled session with story and song time, focusing on supporting children's communication and language development.	1.00pm - 2.30pm
Welcome to Hedgerows Meet and Greet NEW	Are you new to the local area? Are you pregnant? Would you like help applying for 2-year funding? Come along to register and find out all about what Hedgerows Family Centre can offer to you and your family.	1.30pm - 3.30pm
MoreLife Healthy Lifestyles	MoreLife are running healthy lifestyles programmes for children and families. If you would like more information, please speak to a member of the team or contact MoreLife on 0808 208 2340.	5.00pm - 7.30pm

Drop-in Café

Mondays and Wednesdays, 9.00am - 1.00pm

Tuesdays and Thursdays, 1.00pm - 4.00pm

Fridays, 1.00pm - 3.30pm

Our café is open daily for you to drop in for a cup of tea and time to play with your children.

Development Reviews

Mondays, 8.30am - 12.30pm and Fridays, 12.15pm - 3.30pm

Health Visitor development reviews, for more information contact the health visitors hub on 01908 725100.

Thursday

Baby Clinic	An opportunity to drop in, have your baby weighed and speak to the health visiting team.	9.30am - 11.30am
Baby Group	A warm, nurturing baby group with a variety of sensory experiences and time to meet other parents.	9.30am - 11.30am
Fun Fitness for Women	Join Laura from APA fitness in an exercise group for all abilities.	9.30am - 10.30am
Healthy Lifestyles Café NEW	A well-being café for adults to enjoy refreshments and healthy snacks after Fun Fitness for Women.	10.30am - 11.15am
Baby Café	Enjoy a drink in our café with other parents and young children.	11.30am - 12.30pm
Young Parents Group	At Coffee Hall For parents under 25 years old, in partnership with Woughton Community Council, join them for a light lunch, chat and play opportunities for young children and babies.	12.00 noon - 2.00pm
Stay and Play with Sports and Games NEW	A fun filled session with a variety of physical activities, games and learning through play for young children and babies. Join us for indoor and outdoor activities with story, songs and snack time.	1.30pm - 3.00pm

Data Protection Privacy Statement

We collect and use information about you so that we can provide you with the best services possible. Full details about how we use this data and the rights you have around this can be found at www.milton-keynes.gov.uk/cafepolicy. If you have any data protection queries, please contact the Data Protection Officer at data.protection@milton-keynes.gov.uk

Friday

Breakfast Club NEW	Pop in for breakfast and play, a selection of cereals and fruit available.	8.30am - 9.30am
Soft Play	Our range of soft play equipment is here for your young children to explore through rolling, building and crawling.	10.00am - 11.00am
Snack Time Café NEW	Join us for delicious snacks in the café with story and song time.	11.00am - 11.45am
Budgeting Course NEW	Would you like to learn more about budgeting? Please speak to a member of the team for more information. This course will be run by CLMK.	1.30pm - 2.30pm
Feel Good Friday NEW	A group for all adults in our local community to join us for tea, coffee and games.	1.30pm - 3.00pm



Working Parent's Group The 2022 tour update...

This is a call to all mums, dads, carers, uncles, aunts and big brothers and sisters to come along to any of the sessions below to play with their young person in a safe, supportive and creative environment. All Saturday sessions are from 9.30am to 11.30am with pastry treats available.

Saturday 2nd September 2022
Saturday 24th September 2022
Saturday 22nd October 2022
Saturday 26th November 2022
Saturday 10th December 2022

Hedgerows Family Centre, Filton Road
Suttons Children's Centre, Filton
Hedgerows Family Centre, Netherfield
Suttons Children's Centre, Central Library
Hedgerows Family Centre, Netherfield

Any enquiries, please contact
dataprotection@milton-keynes.gov.uk

Tuesday

Breakfast Club NEW	Pop in for breakfast and play, a selection of cereals and fruit available.	8.30am - 9.15am
Community Walk NEW	Meet the team at Hedgerows Family Centre for 9.30am and join The Parks Trust as we walk through the local community to visit and explore nature in our outdoor environment. Make sure you dress for the weather, including suitable footwear.	9.30am - 11.30am
Breastfeeding Café	A relaxing, informal group for pregnant and breastfeeding mums to pop in and get help from specially trained staff, chat to other parents and build your confidence. Please speak to a member of staff for more details.	12.30pm - 2.00pm 1st Tuesday of the month
Visit to Netherfield Library, Story, Songs and Rhymes NEW	Meet us at Hedgerows Family Centre, we will leave promptly at 1.00pm to visit the library in Netherfield where you can loan out books to share at home with your child. Once we are back at Hedgerows, we will be bringing stories to life through play activities and songs and supporting children to explore books.	1.00pm - 3.00pm

Hedgerows Community food trolley (Monday - Friday)

Pop by the centre throughout the week to see what food has been donated by our local church.

Sensory Fun

Mondays, Tuesdays, Wednesdays, 9.00am - 4.00pm
Thursdays, 1.00pm - 4.00pm and Fridays, 1.00pm - 3.30pm

Book our calm, relaxing room with special lighting and music. Please ring the centre for more information.

Wednesday

Mucky Pups	Join in getting messy and having fun together while we explore paints, water, sand, gloop and much more. You may wish to bring spare clothes.	9.30am - 10.45am
MK Housing Drop In	Come along to speak with the MK Housing Officers who are here to offer support and advice on Milton Keynes Council housing.	10.30am - 12.00 noon 4th Wednesday of the Month
Toddler Time	Come and join Annette in her fun filled music sessions with rhymes and action songs.	11.00am - 11.30am
Story Sacks NEW	Join Community Learning Milton Keynes as they deliver an exciting story sacks course, get creative and learn more about bringing stories to life. Please speak to a member of staff for more information.	12.30pm - 2.30pm
Baby Stay and Play	A calm, relaxing sensory session with song and rhyme time for parents and babies with the opportunity to meet other families with activities for you both to join in with.	1.30pm - 3.00pm
Hedgerows Baby Café	Enjoy a drink in our café with other parents and young children, with story and song time.	3.00pm - 3.45pm

Time for twos

You are automatically eligible for 15 HOURS FREE early education for your three or four year old

You may also be eligible for 30 hours FREE early education for your three or four year old. To find out if you are eligible visit:

www.childcarechoices.gov.uk

Or visit your local Children's and Family Centre for more help.



Advice and Support

Woughton Advice Service (WAS)

Tuesdays, 10.00am - 12.00 noon

Support and advice for debt, money advice, benefits and tax credits, eviction, rent arrears, home swap, form filling, computer access, housing advice, work issues, benefit checks and more. Please speak with a member of the team for more information and to make an appointment. This is run by Woughton Community Council. **By appointment only**

Parenting Courses **NEW**

In conjunction with The Rowans Family Centre

Please speak to a member of the team for more information and to book.

Nurture Programme

Hedgerows Family Centre, 13th September - 18th October 2022

Rowans Family Centre, 1st - 29th November 2022

Would you like to think and learn about parenting in a fun and practical way? This programme offers lots of approaches to developing a healthy relationship between you and your children. **Booking required**

Incredible Babies

Rowans Family Centre, 10th January - 14th February 2023

Hedgerows Family Centre, 21st February - 28th March 2023

Would you like to know how to support, promote and understand your babies' developmental needs? This is a course for you to attend with your babies and suitable for expectant parents. **Booking required**

Support for work and training

Volunteering opportunities at the centre. Please speak to a member of team for more details. **Booking required**

Family support

Is available for all households. Please ask for further details from the team.

Booking required

Sharing Library (Monday - Friday)

Speak to a member of the team if you would like to borrow any of our books or story sacks.

Information

Private room hire

Did you know...? That our centres are available for private hire? They are perfect for parties, meetings and wedding receptions. To find out more details for bookings please contact your local centre.

Parents Courses we offer

- Nurturing Programme
- Speakeasy
- Triple P

Community Learning

- Courses we offer
- ESOL
- Basic Skills



MK Together

For information regarding MK

Safeguarding Partnership

arrangements go to the MK

Together website:

www.mktogether.co.uk/



Healthy Start Vitamins

Healthy Start vitamins coupons can be exchanged at all the centres.

Volunteering

Gain some work experience, job opportunities or just help your local community? If so our Children and Family Centres need you! If you have a few hours to spare your local centre has varying roles available, offering accredited volunteer training and enhance your CV.

Food Bank

Please speak to a member of staff at your local centre.



Free Sanitary Products

Help us stop Period Poverty

Find us on Facebook



Are you registered at your local children's centre? If not, visit:
www.milton-keynes.gov.uk/childrens-centres

Hedgerows Family Centre
Langland Road, Netherfield, Milton Keynes, MK6 4NP
01908 239000

M1/0253

WCC Upcoming Events



NOVEMBER

Thur 10th	Film Screening at Coffee Hall	6pm onwards
Fri 11th	Children's Remembrance	10am onwards
Sat 12th	Karaoke Disco Moorland	6pm onwards
Sun 13th	Remembrance	TBC
Sat 12th	Coffee Hall renewal forum	10am – 12am
Fri 18th	Beanhill Renewal Forum	10am – 12am
Sat 19th	Christmas Fair Christ the Vine	
Thur 24th	Tinkers Bridge Residents Asso	7.30pm – 9pm
Sat 26th	Tinkers Bridge Renewal	10am – 12am
Wed 30th	Eaglestone Residents Association	7pm – 9pm

DECEMBER

Sat 3rd	Tinkers Bridge Xmas Market	9am onwards
Sat 10th	Netherfield Panto Trip	All Day
Wed 13th	Netherfield Santa	From 5pm TBC
Wed 14th	Beanhill Santa	6pm TBC
Thur 15th	Peartree Bridge Santa	From 5pm TBC
Thur 15th	Eaglestone Santa	From 6pm TBC
Thur 15th	Leadenhall Santa sleigh	From 7pm? TBC
Fri 16th	Leadenhall RA event at MKA	4.30pm – 6pm
Sat 17th	Coffee Hall Santa	TBC
	Coffee Hall Xmas event	TBC
Sat 17th	Tinkers Bridge Santa	TBC
	Tinkers Bridge Xmas event	TBC
Sun 25th	Christmas meal Coffee Hall	
	Moorlands Xmas dinner	

All dates and events are subject to change so please check before travelling – see www.woughtoncommunitycouncil.gov.uk/events for more information.

[Y]OUR YOUTH SERVICE

Autumn Term

It is getting colder but the youth clubs are on with heating on and hot snack. Make the most of our warm friendly spaces.



Look on our website for our up to date calendar of projects and sessions

The Youth Team are trained & No95 is fully accessible as a Young & Free C Card registration & collection point



JUNIOR YOUTH CLUBS

Arts. Crafts. Fun. Sports. Games.
Plus Healthy Snacks.

Tinkers Bridge Wednesdays

@ Tinkers Bridge Meeting Place

Ages 10-14yrs

Eaglestone Juniors Thursdays

@ Eaglestone Activity Centre

For ages 8-12yrs.

3.15-4.30pm every week



YOUTH CLUB

Netherfield Meeting Place.

Mondays 5-7pm

football on the courts
in partnership with APA
5.30pm.

Generational Community Gardening

@No95

in the Youth Centre Garden.
For families & individuals
of all ages

**Back on from February
Half-Term 3.30-4.30pm
Every Wednesday**

SENIORS

**Healthy Living
Project.**

A safe space to
relax with
friends, cook,
eat, exercise in
our purpose
built Gym.
Develop new
skills & access
support
**@No95
every Tuesday
4-5.30pm**



SATURDAYS

Little Stars

11.15am-12.15pm

Ballet, Tap & Jazz
plus a little Singing &
Drama for your
talented 4-8yr olds

Streets Ahead

12.30-1.15pm

Commercial &
Street dance styles

PHOENIX ARTS

@ Eaglestone Activity Centre

every Tuesday

where every child and young
person from our parish can
explore, practice and excel at
Drama, Singing, Dance
& Musical Theatre and more
for **FREE**.



PLAY RANGERS

@ Tin Man Park.

Beanhill

**every TUESDAY
3.30-4.30pm**



Follow **Woughton Youth** on



For more information call Tash or Gemma on 01908 392945/ 07983 590546,
Reception on 01908 395681 or email tash.darling@woughtoncommunitycouncil.gov.uk
Participants are asked to fill out a registration form the first time they attend projects so
we have emergency contact details in the unlikely event we should need them.

www.woughtoncommunitycouncil.gov.uk

WOUGHTON COMMUNITY COUNCIL
WOUGHTON COMMUNITY COUNCIL HUB |
THE LOCAL CENTRE | GARRAWAYS | COFFEE HALL |
MILTON KEYNES | MK6 5EG

TEL: 01908 395681

EMAIL: reception@woughtoncommunitycouncil.gov.uk

Leadenhall



Penny Glasgow
01908 395681
penny.glasgow@

Eaglestone



Pam Wilson
01908 395681
pam.wilson@



Luke Louis
07434 658225
luke.louis@



Jordan Coventry
07340 308181
jordan.coventry@



Liz Simpkins
07768 288993
liz.simpkins@

* All email addresses are as follows:
firstname.surname@woughtoncommunitycouncil.gov.uk

Coffee Hall



Vacant



Donna Fuller
077925 237282
donna.fuller@



Lauren Townsend
07599 886744
lauren.townsend@



Nick Scott
01908 606669
nick.scott@

OPENING HOURS:

Mon / Tues / Thurs - 9am-5pm
Friday - 9am - 4pm
Weds - 9am - 12pm



Peartree Bridge



Ruth McMillan
07999 661632
ruth.mcmillan@



Sue Smith
01908 476043
sue.smith@

Tinkers Bridge



John Orr
07565 922368
john.orr@

Netherfield



Janette Bobey
07951 117905
janette.bobey@



Terri Parish
07780 373322
terri.parish@



Elina Apse
07722 466796
elina.apse@



Maggie Ferguson
07703 619574
maggie.ferguson@

Beanhill



Amber McQuillan
07495 301358
amber.mcquillan@



Brian Hepburn
07790 555593
brian.hepburn@



Alan Williamson
01908 234821
alan.williamson@