

Woughton Community Council Newsletter

# MY WOUGHTON Gazette

AUTUMN EDITION

NOVEMBER 2023



Beanhill



Coffee Hall



Eaglestone



Leadenhall



Netherfield



Peartree  
Bridge



Tinkers  
Bridge



05-06

Flood plan

09-12

The Future of Woughton Pull Out

14-17

Helpful Hints on Waste

The official source of parish news and information to residents of Woughton

WOUGHTON COMMUNITY COUNCIL | WOUGHTON COMMUNITY COUNCIL HUB |  
THE LOCAL CENTRE | GARRAWAYS | COFFEE HALL | MILTON KEYNES | MK6 5EG

TEL: 01908 395681 | EMAIL: [reception@woughtoncommunitycouncil.gov.uk](mailto:reception@woughtoncommunitycouncil.gov.uk)  
OPENING HOURS: Mon / Tues / Thurs = 9am - 5pm | Friday = 9am - 4pm Weds = 9am - 12pm







## Milton Keynes Neighbourhood Watch Association



# Our New Year's Resolution

Neighbourhood Watch in the Milton Keynes district has a New Year's resolution! We hope you can join in and share with us. Our wish is for a safer and more secure place for ourselves, our families and our communities in 2023 ... and here's how.

- 1 Firstly, please sign up to Neighbourhood Watch by visiting [ourwatch.org.uk](http://ourwatch.org.uk) (click on Join us). One massive and immediate benefit of signing-up is that you also register to receive Thames Valley Police Alerts. The Alert system is used by our local Police team to alert us of major crimes, incidents, missing people and other important appeals for vigilance and feedback in our areas. Quite simply, the more people who sign up, the more aware we are and the more opportunities we have to report back to the Police. Currently, we have approximately 13,000 residents signed up, but with your help, let's add at least another 2,023 to that!
- 2 Secondly, again through the above website, click on 'Find your local Neighbourhood Watch scheme' and enter your postcode. There's often a scheme close to you and by clicking on the actual title of the scheme you can see its map and join. By joining, you help our work promoting safer homes and communities, as well as strengthening our partnership with the Police to support us and your local area.



If there isn't a Watch scheme that covers your area then what about starting one? After you have entered your postcode, you can scroll down and click to start a new scheme. There's not a crazy amount of work to do to set up a scheme and we can help you. The reward is improving the awareness and well-being of your family and neighbours and encouraging a safer, more secure community.

If you need help or have any questions, contact us via [enquiries@mknhwa.org.uk](mailto:enquiries@mknhwa.org.uk)

We wish you a safe and successful New Year and hope you can make our New Year resolution successful!

**Nick King, Chair, Milton Keynes Neighbourhood Watch Association**

## Words from the Chair



**Well, I can't believe it's that time again, this year is seriously whizzing pass.**

**As I write this, we are in the midst of storm Babet.** We had some local flooding last Friday, but the incident group at the Parish worked their little socks off, delivering equipment and support where needed. MKCC were a little late with coming out with a tanker to empty drains, but we are working with them to make things a little better. Residents and Councillors shouldn't be on tenterhooks every time a drop of rain falls.

**We had a difficult summer** where we had to cancel some of our Fundays and other events, but lots of things went ahead. Some of our young people enjoyed activities at the Caldecott Experience, Gulliver's Land, and other things too.

**It's budget consultation time** - this is very important to us Councillors as it's your opportunity to tell us what is important to you. We need you to tell us about your priorities on the very tight budget. Please take time to fill out survey - you can do this on many platforms like website, inside this edition of gazette or even e mail your estate Councillors. The more residents that tell us their views, the better picture we have.

**Christmas is fast approaching,** and it's a difficult time for some of our residents. People with no family locally being on their own,

budgets stretch to the limit with providing a Christmas lunch, pressures of tv adverts getting the children the latest toys.

**We are here for you.**

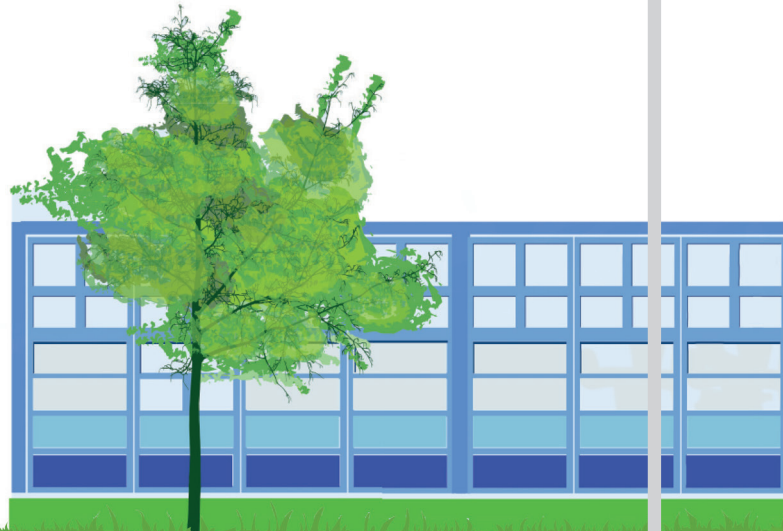
We have advisers here to help with budgeting and other problems, as well as staff that can help support wellbeing. You don't have to deal with things on your own.

Enough of the sad things, I just would like to say, (early I know)

**Have a lovely Christmas and a not too merry New Year.**

**Let's hope 2024 is an easier year than 2023.**

*Sue Smith*





**Moving Grounds** is a 9-12-month project between Motus Dance and our very own Youth Service, that will not only give local young people a chance to explore new style of dance, it will include the regeneration of the Barista Park in Coffee Hall. Motus means Movement, Progress & Passion, this project will have it all!

Play equipment repairs, landscaping, installation of new bins and creation of a natural play trail will all be completed by May 2024.



Most notably, the project will include the repainting of the four large walls that face the street on Jonathans.

The first Community Day will launch the project on Friday 27th October, with all WCC officers coming together, alongside the community to begin the works. Lots of cleaning and clearing accompanied by creative workshops and some warm snacks.

There will be Dance & Art workshops within our parish schools through February & March.

A second Community Day in April will provide an opportunity for local artists and local people to paint the park sides of the walls together. This will be followed by the repainting of the main walls by the commissioned professional artist, with designs created from all the ideas from the workshops and engagement with the community. Early in May 2024 there will be an Unveiling Day, when Dance, Music & Graffiti artist will come together for one big Picnic in the Park celebration.

We hope that as many local people as possible of all ages, will come along to the events to meet the team and the artists, share their ideas, and get involved.

## Planters to help with flooding



If you live on Coffee Hall, have a downpipe from your roof into your garden and space next to it of approximately 1200mm x 900mm x 600mm, then MKCC with funding from Anglian Water can install a SuDS planter.

This will slow down rain run-off from the roof by providing temporary storage, allowing the water to slowly flow into the drainage system.

Ten planters are being funded for residents of Coffee Hall as part of the flood alleviation works. They will be installed (subject to survey) and if required, planted up – or you could choose to plant it yourself.

If you are interested contact Lorraine at Woughton Community Council 01908 395681 or [lorraine.essam@woughtoncommunitycouncil.gov.uk](mailto:lorraine.essam@woughtoncommunitycouncil.gov.uk) as soon as possible to be included on the scheme.

The next two pages include a personal flood plan that may be helpful for people to use.

More information at <https://www.gov.uk/government/publications/personal-flood-plan>



# Personal flood plan

Name



## Are you signed up to receive flood warnings?

If not call Floodline on 0345 988 1188 to see if your area receives free flood warnings.

Let us know when you've completed your flood plan by calling Floodline on **0345 988 1188**. This will help us learn more about how people are preparing for flooding.

General contact list	Company name	Contact name	Telephone
Floodline	Environment Agency		0345 988 1188
Electricity provider			
Gas provider			
Water company			
Telephone provider			
Insurance company and policy number			
Local council			
Local radio station			
Travel/weather info			

## Key locations

Service cut-off	Description of location
Electricity	
Gas	
Water	

## Who can help/who can you help?

Relationship	Name	Contact details	How can they/you help?
Relative			
Friend or neighbour			

Be prepared for flooding. Act now

- Put important documents out of flood risk and protect in polythene
- Look at the best way of stopping floodwater entering your property
- Check your insurance covers you for flooding
- Make a flood plan and prepare a flood kit
- Find out where you can get sandbags
- Identify who can help you/ who you can help
- Identify what you would need to take with you if you had to leave your home
- Understand the flood warning codes

**What can you do if a flood is expected in your area?**

Actions	Location
<b>Home</b>	
<ul style="list-style-type: none"> <li>Move furniture and electrical items to safety</li> <li>Put flood boards, polythene and sandbags in place</li> <li>Make a list now of what you can move away from the risk</li> <li>Turn off electricity, water and gas supplies</li> <li>Roll up carpets and rugs</li> <li>Unless you have time to remove them hang curtains over rods</li> <li>Move sentimental items to safety</li> <li>Put important documents in polythene bags and move to safety</li> </ul>	
<b>Garden and outside</b>	
<ul style="list-style-type: none"> <li>Move your car out of the flood risk area</li> <li>Move any large or loose items or weigh them down</li> </ul>	
<b>Business</b>	
<ul style="list-style-type: none"> <li>Move important documents, computers and stock</li> <li>Alert staff and request their help</li> <li>Farmers move animals and livestock to safety</li> </ul>	
<b>Evacuation - Prepare a flood kit in advance</b>	
<ul style="list-style-type: none"> <li>Inform your family or friends that you may need to leave your home</li> <li>Get your flood kit together and include a torch, warm and waterproof clothing, water, food, medication, toys for children and pets, rubber gloves and wellingtons</li> </ul>	

There are a range of flood protection products on the market to help you protect your property from flood damage. A directory of these is available from the

**National Flood Forum** at [www.bluepages.org.uk](http://www.bluepages.org.uk)

**Be prepared for flooding. Act now**



# Woughton Community Garden

It's here!



There were unavoidable delays due to Covid but now the new **Woughton Community Garden** is finally taking shape.

Thanks to a very big grant from The National Lottery, we can now build a wonderful growing space on Coffee Hall for the residents of Woughton. This is to be a centre for all things horticultural. Residents both old and young can share and learn about growing – vegetables, flowers, shrubs etc.

Another grant from Milton Keynes Community Foundation enabled the fencing to be completed so that the classroom log cabin, gazebo and polytunnel could be installed. All buildings should be in place by the Autumn to enable a full growing season next year.



Our Environment and Landscape team have worked hard to build the basics, so now we need volunteers to help raise the plants!



The idea around a community garden is for groups to work together for the community, unlike an allotment where individuals work a plot for themselves. Therefore we welcome Residents Associations, faith groups, charities, wellbeing groups, youth clubs and schools who would love to be a part of this fantastic project. Vegetables can be grown for all to enjoy, and flowers and shrubs raised to improve the gardens and estates in Woughton.

Text **REFLECT** to **85258** to start a free, confidential text conversation with a trained volunteer, who can help with issues such as:

- Anxiety
- Stress
- Depression
- Suicidal thoughts
- Self-harm
- Abuse
- Relationship problems
- Bullying
- Panic attacks
- Loneliness

Texting is anonymous and will not appear on your phone bill. You will not be charged for using this service.

For support while we connect you, visit:  
[giveusashout.org/get-help/resources](https://giveusashout.org/get-help/resources).

**If your life is at risk, please call 999 for immediate help.**



“ The conversation  
we had made me feel  
so much better ”

**Text REFLECT to 85258**  
for free and confidential support 24/7



# The Future of Woughton – what matters to you?

Woughton Community Council provides a range of services and support to the 15,000 people living within the parish, alongside the thousands of people who work, attend school and visit the parish every day.

Each year, we ask you, our residents, what you would like to see us do. Whilst we can't always do everything, we check every response and make sure that everybody who contributes has their views heard. Over the last year, this has meant that, following your feedback, we have:

- Increased the number of events, focusing on those that are suitable for everyone, young and old (community cinema, disco bingo, Coronation, Jubilee, community cafes)
- Worked with Crimewave to obtain CCTV cameras which will be used across the parish over the next three years to try and address issues such as anti-social behaviour, fly tipping, parking issues and other issues
- Increased cutting back of shrubbery to try and improve visibility and reduce the amount of litter / vermin within the bushes (this is ongoing - they just keep growing!)
- Worked with MKCC to try and address parking issues across the parish. This has not resulted in as much as we hoped, but we will continue to push for more improvements
- Updated dog waste bins and increased the number of waste bins within the parish. This will continue with more new bins planned
- Made some changes to mowing and planting, to help increase biodiversity and bring greater benefits to nature.
- Created a 'flood kit' - equipment to help reduce the risks, manage the situation and recover more quickly if flooding happens again (this includes wet / dry vacuums, inflatable sandbags, water diversion equipment, dehumidifiers, etc.)

There are things that we can't do - roads, street lights, rubbish collections, schools, social care - these are all MKCC services and whilst we will assist where we can, we cannot do the work ourselves. We continue to offer the wide range of support that we always have - advice, wellbeing, youth services, landscaping, environment team, community grants, training and education, community centres and more.

This survey aims to see what matter most to you, what you would like to see us doing and what matters most.

**Please complete and return your form to our office, one of our  
community centres or to any officer or councillor or visit:**

**[www.surveymonkey.co.uk/r/woughtonfutures](http://www.surveymonkey.co.uk/r/woughtonfutures)**



## Of our current services, which do you think are important? Tick all that apply

- Youth Service (open access clubs, Play Rangers, music / film clubs, specialist services, schools work, etc.)
- Wellbeing and Advice Service (provision of tailored advice and information to local residents, outreach sessions, etc.)
- Grant Aid (grants to local groups for community benefit)
- Environment Team (dog bins and bags, fly tipping, abandoned vehicles, rubbish / waste issues, green open spaces, etc.)
- Community Fridges and Cafes (reducing food waste, providing access to social and nutritional support, etc.)
- Events (Festival, Apple Day, Diwali, networking breakfasts, Christmas meals, Remembrance Day, etc.)
- Community Support (supporting local groups, schools, older people, people with disabilities, etc.)
- Community Centres (provision of centres in Coffee Hall, Netherfield, Tinkers Bridge and Eaglestone)
- Landscaping (grass cutting, hedge management, shrubbery, tree crowning, etc.)
- Other (please specify)

## And of those services, which have you used or benefited from over the past year? Tick all that apply

- Youth Service (open access clubs, Play Rangers, music / film clubs, specialist services, schools work, etc.)
- Wellbeing and Advice Services (provision of tailored advice and information to local residents, outreach sessions, etc..)
- Grant Aid (grants to local groups for community benefit)
- Environment Team (dog waste bins and bags, fly tipping, abandoned vehicles, rubbish / waste issues, green open spaces, etc..)
- Community Fridge and Cafe (reducing food waste, providing social and nutritional support, etc.)

- Events (Festival, Apple Day, Diwali, networking breakfasts, Christmas meals, Remembrance Day, etc.)
- Community Support (supporting local groups, schools, older people, people with disabilities, etc.)
- Community Centres (provision of centres in Coffee Hall, Netherfield, Tinkers Bridge and Eaglestone)
- Landscaping (grass cutting, hedge management, shrubbery, tree crowning, etc.)
- Other (please specify)

## And of the projects and new initiatives over the past year, which do you support?

- New waste bins
- New dog waste bins
- The events, such as Jubilee, Coronation, Community Cinema, Games night, Disco Bingo, etc.
- The changes to landscaping, with areas left to 'meadow', reduced chemical use, battery powered tools, etc.
- The use of CCTV and evidence gathering across the parish
- The community cafes and fridges / larders
- The Community Gardens and growing spaces for residents to access
- Ongoing work to try and manage the issues of parking across the parish
- Oversight of planning applications and responses as an 'interested party'
- Work with MKCC to provide equipment to help prevent, manage and recover from any future flooding
- Something else (please provide some details)

**Last year, we kept the precept increase as low as possible - inflation meant that our costs have gone up by around 15%, with the increase kept at 5% (about £1 a month for most in the parish). This compares to some other areas in the city where increases were as high as 33%.**





## What is more important to you?

- Small / no increases and fewer services (less than £1 a month increase)
- A medium increase to maintain current delivery (around £2 a month increase)
- A large increase with more services and support (More than £2 a month increase -let us know what you would like to see)

If a larger increase, what should we spend that on? What services or support would you like to see?

**If you are happy to do so, please let us know a little bit about you. This helps us make sure we are hearing from as many in our community as possible**

### Which estate do you live / work on?

- Peartree Bridge
- Leadenhall
- Eaglestone
- Coffee Hall
- Beanhill
- Netherfield
- Tinkers Bridge
- Redmoor
- Bleak Hall

### What age bracket do you fit into?

- Under 18
- 18-24
- 25-34
- 35-44
- 45-54
- 55-64
- 65+
- Would rather not answer

## And which of the following most accurately describe you?

- Female
- Male
- Non-binary
- Transgender
- Intersex
- I prefer not to say
- Let me write....

### Which race or ethnicity best describes you?

- White
- Black
- Asian
- Mixed
- Other (please specify)

### Would you consider that any of the following apply to you?

- I or someone in my household has a physical disability
- I or someone in my household has a mental health issue
- I experience loneliness or isolation
- I find it difficult to access services or support
- I would like to volunteer to help others / I already volunteer
- I feel involved and connected with my community

**Many thanks for completing this survey. We will use your views to help decide on how we deliver services and support in the future.**






# Our budget for the current year and proposals for the coming year





The table below shows our budget for this year and three possible options for the coming year.

## 2023/24 budget mid year plus 2023/25 v1

	20203/24	Reforecast Sept 23	2024/25 V1 (5%)	2024/25 V1 (10%)	2024/25 V1 (15%)
<b>EXPENDITURE - Democracy and Governance</b>					
Clr Ward Initiatives Fund	£ 3,800.00	£ 3,800.00	£ 3,800.00	£ 3,800.00	£ 3,800.00
Communities and Environment Fund	£ 12,000.00	£ 12,000.00	£ 12,000.00	£ 12,000.00	£ 12,000.00
Grant Aid - Res Associations	£ 3,500.00	£ 3,000.00	£ 3,500.00	£ 3,500.00	£ 3,500.00
Member Allowances and Expenses	£ 15,000.00	£ 15,000.00	£ 19,109.70	£ 19,109.70	£ 19,109.70
<b>Democracy and Governance Total</b>	<b>£ 34,300.00</b>	<b>£ 33,800.00</b>	<b>£ 38,409.70</b>	<b>£ 38,409.70</b>	<b>£ 38,409.70</b>
<b>EXPENDITURE - Whole organisational services</b>					
Meeting and hospitality costs	£ 2,000.00	£ 1,000.00	£ 1,000.00	£ 1,000.00	£ 1,000.00
Insurance inc Vans	£ 9,000.00	£ 10,000.00	£ 10,000.00	£ 10,000.00	£ 10,000.00
HQ - Building Costs (regulars)	£ 25,000.00	£ 30,000.00	£ 30,000.00	£ 30,000.00	£ 30,000.00
Vehicles	£ 5,000.00	£ 5,000.00	£ 5,000.00	£ 5,000.00	£ 5,000.00
Uniforms	£ 500.00	£ 500.00	£ 500.00	£ 500.00	£ 500.00
Branding and engagement	£ 500.00	£ 500.00	£ 500.00	£ 500.00	£ 500.00
CCTV		£ 12,000.00	£ 12,000.00	£ 12,000.00	£ 12,000.00
<b>Whole organisation services total</b>	<b>£ 42,000.00</b>	<b>£ 59,000.00</b>	<b>£ 59,000.00</b>	<b>£ 59,000.00</b>	<b>£ 59,000.00</b>
<b>EXPENDITURE - Organisational Management</b>					
Affiliations	£ 5,250.00	£ 4,000.00	£ 4,000.00	£ 4,000.00	£ 4,000.00
Professional Services	£ 4,000.00	£ 8,500.00	£ 8,500.00	£ 8,500.00	£ 8,500.00
Audit Fees	£ 4,800.00	£ 3,100.00	£ 3,100.00	£ 3,100.00	£ 3,100.00
Capital Loan Repayment	£ 26,818.00	£ 26,818.00	£ 26,818.00	£ 26,818.00	£ 26,818.00
Newsletters, Websites and Communications	£ 5,510.00	£ 2,000.00	£ 2,000.00	£ 2,000.00	£ 2,000.00
Stationery and Amenities and services - HQ	£ 4,000.00	£ 4,000.00	£ 4,000.00	£ 4,000.00	£ 4,000.00
IT (previously included broadband and Members IT)	£ 25,000.00	£ 25,000.00	£ 25,000.00	£ 25,000.00	£ 25,000.00
Training, Development and Conferences	£ 8,000.00	£ 5,000.00	£ 6,000.00	£ 6,000.00	£ 6,000.00
Organisational Management Total	£ 75,378.00	£ 78,418.00	£ 79,418.00	£ 79,418.00	£ 79,418.00
<b>Organisational Costs Total</b>	<b>£ 151,678.00</b>	<b>£ 171,218.00</b>	<b>£ 176,827.70</b>	<b>£ 176,827.70</b>	<b>£ 176,827.70</b>
<b>Staffing Costs - increments included</b>					
HQ Staffing	£ 204,149.25	£ 204,149.25	£ 204,149.25	£ 204,149.25	£ 204,149.25
Youth Staffing	£ 96,686.18	£ 96,686.18	£ 96,686.18	£ 96,686.18	£ 96,686.18
Community Staffing	£ 145,064.12	£ 145,064.12	£ 145,064.12	£ 145,064.12	£ 145,064.12
Landscape and Environment Staffing	£ 255,375.85	£ 255,375.85	£ 255,375.85	£ 255,375.85	£ 255,375.85
Members Staffing	£ 32,906.38	£ 32,906.38	£ 32,906.38	£ 32,906.38	£ 32,906.38
Meeting Places Staffing	£ 73,682.03	£ 73,682.03	£ 73,682.03	£ 73,682.03	£ 73,682.03
Increments & payrise (5%)	£ -	£ -	£ 40,393.19	£ 40,393.19	£ 40,393.19
Staffing cover	£ 25,000.00	£ 25,000.00	£ 25,000.00	£ 25,000.00	£ 25,000.00
<b>Staffing Total</b>	<b>£ 832,863.81</b>	<b>£ 832,863.81</b>	<b>£ 873,257.00</b>	<b>£ 873,257.00</b>	<b>£ 873,257.00</b>
Landscape - Building costs	£ 6,000.00	£ 6,000.00	£ 2,000.00	£ 2,000.00	£ 2,000.00
Landscape - Services Budget	£ 18,000.00	£ 60,000.00	£ 40,000.00	£ 40,000.00	£ 40,000.00
Youth - Building Costs	£ 7,000.00	£ 7,000.00	£ 7,000.00	£ 7,000.00	£ 7,000.00
Youth - Services Budget	£ 8,000.00	£ 8,000.00	£ 8,000.00	£ 8,000.00	£ 8,000.00
Advice - Services Budget	£ 500.00	£ 500.00	£ 500.00	£ 500.00	£ 500.00
Environment - Services Budget (inc dog bins)	£ 9,500.00	£ 9,500.00	£ 10,000.00	£ 10,000.00	£ 10,000.00
Community Food - Services Budget	£ 2,000.00	£ 2,000.00	£ 2,000.00	£ 2,000.00	£ 2,000.00
Community Development - Services Budget (incl events)	£ 9,000.00	£ 9,000.00	£ 9,000.00	£ 9,000.00	£ 9,000.00
Meeting Places (Costs)	£ 65,000.00	£ 62,000.00	£ 65,000.00	£ 65,000.00	£ 65,000.00
Service Plan Delivery	£ 20,000.00	£ 12,000.00	£ -	£ -	£ -
Emerging priorities	£ 10,000.00	£ -	£ -	£ -	£ -
Grants - services payments (BLF)	£ 37,629.51	£ 30,000.00	£ -	£ -	£ -
Community Centres investment (agreed)	£ 90,000.00	£ 45,000.00	£ -	£ -	£ -
<b>Services Delivery Total</b>	<b>£ 282,629.51</b>	<b>£ 251,000.00</b>	<b>£ 143,500.00</b>	<b>£ 143,500.00</b>	<b>£ 143,500.00</b>
<b>Depot / Landscape Investment</b>	<b>£ -</b>	<b>£ -</b>	<b>£ -</b>	<b>£ -</b>	<b>£ -</b>
<b>EXPENDITURE TOTAL</b>	<b>£ 1,267,171.32</b>	<b>£ 1,255,081.81</b>	<b>£ 1,193,584.70</b>	<b>£ 1,193,584.70</b>	<b>£ 1,193,584.70</b>
<b>INCOME</b>					
Bank and investment interest	£ 3,200.00	£ 4,000.00	£ 4,000.00	£ 4,000.00	£ 4,000.00
MKC LTRS Grant / Deprivation grant	£ 168,592.99	£ 168,592.99	£ 168,000.00	£ 168,000.00	£ 168,000.00
Hire of Meeting Places	£ 65,000.00	£ 50,000.00	£ 60,000.00	£ 60,000.00	£ 60,000.00
Landscape Grant	£ 189,182.87	£ 172,000.00	£ 180,600.00	£ 180,600.00	£ 180,600.00
Landscape additional	£ -	£ 25,000.00	£ -	£ -	£ -
Precept	£ 688,403.88	£ 688,403.88	£ 722,824.07	£ 757,244.26	£ 791,664.46
Grants income (agreed)	£ 54,009.51	£ 54,009.51	£ -	£ -	£ -
MKC Funding - Comm Centres and CIF	£ 52,000.00	£ 11,714.00	£ -	£ -	£ -
Additional income Generation	£ 30,000.00	£ 30,000.00	£ 30,000.00	£ 30,000.00	£ 30,000.00
<b>Income Total</b>	<b>£ 1,250,389.25</b>	<b>£ 1,203,720.38</b>	<b>£ 1,165,424.07</b>	<b>£ 1,199,844.26</b>	<b>£ 1,234,264.46</b>
<b>SURPLUS / DEFICIT</b>	<b>£ 16,782.06</b>	<b>£ 51,361.43</b>	<b>£ 28,160.62</b>	<b>£ 6,259.57</b>	<b>£ 40,679.76</b>
Balance carried over from 2022/23 (NB includes £100k in long term CCLA)	£ 468,738.10	£ 468,738.10	£ 417,376.67	£ 417,376.67	£ 417,376.67
Proposed surplus / deficit	£ 16,782.06	£ 51,361.43	£ 28,160.62	£ 6,259.57	£ 40,679.76
End of year carry over	£ 451,956.04	£ 417,376.67	£ 389,216.05	£ 423,636.24	£ 458,056.44

Woughton Community Council  
The Hub, Local Centre  
Garraways, Coffee Hall  
Milton Keynes, MK6 5EG  
www.woughtoncommunitycouncil.gov.uk  
01908 395681

 Facebook.com/woughtoncc  
 Instagram.com/woughtoncc  
 Twitter.com/woughtoncc

 Tinkers Bridge Meeting Place  
 Coffee Hall Meeting Place  
 Netherfield Meeting Place  
 Eaglestone Activity Centre  
95 Jonathans



# Fly tipping



## Out of town fly tipper fined £1,500

A Northampton man who pretended to be a registered waste carrier has been ordered to pay £1,500 in fines and costs for dumping waste illegally in Milton Keynes.

He was paid a £100 by a resident in Northamptonshire to dispose of their waste properly, but Woughton Community Council discovered the dumped rubbish on Rainbow Drive in Leadenhall.

Following an investigation by Milton Keynes City Council, the case was brought to Milton Keynes Magistrates Court where the offender pleaded guilty to illegally dumping waste and transporting the rubbish without being a registered carrier. He was fined £733, and ordered to pay the city council's legal fees of £521 and a victim surcharge of £293.

*"We will not tolerate fly tipping in our city and we take action to crack down on fly tippers. In the last 18 months we've put forward 50 cases for prosecution*

*and issued hundreds more Fixed Penalty Notices. We'll continue to work with parish and town councils and other partners to track down the offenders who disrespect our green spaces and communities."*

**- Cllr Lauren Townsend, Cabinet Member for the Public Realm**

*"We are pleased that our hard work for the residents of Woughton has paid off and that the person responsible for dumping this rubbish in our community has been caught. We will continue to work with colleagues at Milton Keynes City Council to ensure no offenders get away with disrespecting our estates and green spaces in this way."*

**- Cllr Donna Fuller, Councillor in the ward and Leader of Woughton Community Council**

## ENFORCEMENT ACTIONS

Over the last 3 months there have been some decisive actions taken by MKCC Enforcement Team on the Parish.

In total, 8 fixed penalty notices have been issued with 3 being unpaid and case files being submitted to court.

There were 41 abandoned vehicles dealt with, either by them being declared not abandoned, being moved while being investigated or otherwise.

A snippet of the other actions dealt with and subsequently closed: 28 for dumped rubbish; 3 for littering; 5 for improper use of waste receptacle and 3 for breach of duty of care with waste.

A good relationship has been established with the enforcement team and we'll continue to assist and report where we can!







## **BINMAGEDON!**

### **Or, new waste collections and how best to manage them**

We are now a couple of months into the new waste and recycling collections, with the new bins, new collection day and new ways of managing. After a tricky first month, things seem to have settled down, but there are still some difficulties for some people.

Here's some helpful hints that we hope might help, as well as some of the stuff from Milton Keynes City Council about what goes where and how to get help.

One of the issues is making sure that the right stuff is in the right bin and that the lid closes (if it is over full, they simply won't take it). To help with this, you might want to think about...

#### **Squash it!**

Plastic bottles should have their lids removed and be squashed so that they take up as little space as possible. If you put a pop bottle in your bin that

hasn't been flattened and has its lid on that is one big pocket of air wasting space in your bin. Try flattening your bottle and rolling it up from one end.

#### **Flatten it!**

Cardboard boxes are another culprit for taking up more space than needed in your bin. Flatten thin cardboard boxes like cereal and tissue boxes before putting them in your recycling.

If you have big cardboard boxes like the ones a lot of online shopping is delivered in they can be re-used for storage in the attic, making a boat or rocket with little kids, as a tempting cat bed for your furry friend or simply to package parcels.

If you aren't going to re-use them these should be cut up into smaller pieces or carefully folded to fit inside your bin. Be careful not to get cardboard

## Green bin: food and garden waste



**What goes in?**

**Yes please** ✓

- All cooked and raw food waste
- Flowers, grass, leaves, plants, twigs, weeds and fruit
- Small branches up to 15cm in diameter
- Tea bags, coffee grounds, peelings, bones, pet food, dairy etc
- Bread and baked goods
- Mouldy or out of date food

**No thanks** ✗


- No packaging of any kind
- Animal waste including dog poo, cat litter, hamster/gerbil bedding etc
- Branches over 15cm in diameter
- Japanese knotweed
- Plant pots
- Soil

**Collected weekly**

**On collection day, please**

- Put your bin out by 7am
- Ensure the bin lid is fully closed
- Return your bins to your property once emptied

## Black bins or black sacks: household waste that can't be recycled



**What goes in?**

**Yes please** ✓

- Waste that can't be recycled
- Nappies and double bagged animal waste can ONLY go in the black bin/sack
- Find a full list at: [www.milton-keynes.gov.uk/recycling](http://www.milton-keynes.gov.uk/recycling)

**No thanks** ✗

- Items that you can recycle
- Hot ash, soil or rubble
- Bulky or electrical items
- Gas canisters of any kind

**Collected weekly Starting from w/c 4 Sept**

**Yellow bag: batteries**

**What goes in?**

**Yes please** ✓

- Household batteries
- Laptop batteries
- Mobile phone batteries

**No thanks** ✗


- Household batteries that are leaking
- Car batteries - recycle at tip instead

**Collected as needed, with the rest of your waste and recycling**

You can also take batteries to supermarkets for recycling

## Communal bins for flats

**WEEKLY Non-recyclable waste**



**What goes in?**

**Yes please** ✓

- Waste that can't be recycled
- Nappies and double bagged animal waste can ONLY go in the black bin

**No thanks** ✗

- Items that you can recycle
- Hot ash, soil, or rubble
- Bulky or electrical items
- Gas canisters of any kind

**WEEKLY Recyclable waste**



**What goes in?**

**Yes please** ✓

- Plastic bottles, pots, tubs, ready meal containers
- Tins and cans and empty aerosols
- Mixed paper and card
- Glass bottles and jars

**No thanks** ✗

- Nappies, whether they're used or not
- Plastic wrap such as from the top of ready meals
- Hard plastic such as furniture or toys

**NEW! Glass bottles and jars can be recycled here**

**Milton Keynes City Council**

[www.milton-keynes.gov.uk/recycling](http://www.milton-keynes.gov.uk/recycling)



wedged in your recycling bin as that may mean it won't be able to be emptied properly and the collection crews aren't allowed to pull it out.

If you have lots of cardboard, for example from a house move, you can take this to the Household Waste Recycling Centre.

### Crush it!

If you have lots of cans, especially drinks cans, in your waste you might find you can save a load of space by crushing these. Either use a can crusher or make sure you're wearing heavy-duty / sturdy shoes so you don't get hurt and crush them under foot. Be careful, once crushed your cans might be quite sharp.

### Stack it!

If you have lots of recycling that is all the same, like yoghurt pots, stack these up before you put them in the recycling bin so they take up a lot less space.

You can check the details below about what goes in which bins – there may be times where you could work with your neighbours to 'share' bin space. Where you have done work in the garden and have extra green waste, see if your neighbours would allow you to use any spare space in theirs. The same could be true if you have a time where they have lots of cardboard (birthdays, etc.) and ask for space in your bin. Sharing can help ensure everyone gets what is needed.

## Reduce, reuse and recycle

Another way of helping reduce recycling, is to consider other approaches – the 'reduce, reuse and recycle' approach tries to make sure that waste is as low as possible.

### Reduce the amount of waste you produce

Everything we produce and consume has an impact on the environment in some way. Making careful decisions about what we buy can have a huge impact. Cutting waste is the best way to help the environment. A few key changes you could make are

- Reduce packaging of products you buy
- Shop greener, for example from second hand shops
- Reduce food waste by meal planning and composting kitchen waste.

### Reuse items as much as you can before replacing them

Many items found around the home have different purposes. If we reuse items we avoid disposing of them.

- Save glass jars to use for storage
- Use reusable coffee/tea/water cups/bottles and shopping bags
- Reuse envelopes and other packaging to send letters or parcels instead of buying new



Re-using items may look like repairing them instead of replacing them. There are repair café's in Milton Keynes that you can access. Here you can fix things from electricals, textiles, electronics, mechanical goods and more.

So not only do we reduce waste by reusing items we can save money too.

### Recycle items whenever possible

Where you can't reduce or reuse, then recycling is the next best option.

### What can and can't be recycled?

Check the MKCC lists for what goes in what bins.

You can also recycle some other bits and bobs with other schemes – the big one in MK is Charity Recycling MK (<https://www.facebook.com/recyclemk>) who raise loads of money for local good causes. See the picture below or check their page for more information.

## About your new waste and recycling collections

From 4 September, how we collect waste and recycling is changing as we modernise the service.

Most residents will move to wheelie bins, as preferred by three quarters of local people who responded to our consultation. However, as not everyone's property is suitable for wheelie bins, some residents will continue to use sacks or communal bins.

### When will my bins be emptied?

Weekly collections will continue for green bins, and for black bins or sacks. Blue and red bins or sacks will be collected on alternate weeks, blue one week and red the next.

We're delivering a handy calendar alongside your new bins/sacks, which is also on our website, so you always know what bin to put out when.

w/c 4 September		<b>On collection day, please</b> <ul style="list-style-type: none"> <li>Put your bin out by 7am</li> <li>Ensure the bin lid is fully closed</li> <li>Return your bins to your property once emptied</li> </ul> <b>When recycling, if in doubt, leave it out.</b> Update your recycling knowledge at: <a href="http://www.milton-keynes.gov.uk/recycling">www.milton-keynes.gov.uk/recycling</a>
w/c 11 September		
w/c 18 September		
w/c 25 September		

# CHARITY RECYCLING MK

## TURNING TRASH INTO CASH

DOMESTIC RUBBER GLOVES  
MARIGOLDS & DISPOSABLES

ALL BISCUIT, CRACKERS  
AND CAKE WRAPPERS

BREAD/BAKERY BAGS

TRIGGER SPRAY TOPS  
SURFACE WIPE PACKS  
DISHWASHER/LAUNDRY TABS  
OUTER BAGS & PLASTIC TUBS

PRINGLES TUBES

CONFECTIONERY WRAPS  
CHOCOLATE, SWEETS etc.  
ALL BRANDS ACCEPTED

SKIN & MAKEUP  
FACE WIPE PACKETS,  
CREAM TUBES,  
COMPACTS, LIPSTICK ETC

COFFEE BEAN BAGS &  
GROUND COFFEE BAGS  
NO PODS PLEASE

FERRERO ROCHER CHOCOLATES  
PLASTIC BOXES AND FOIL

ALL CRISP BAGS, NUTS  
PRETZELS & POPCORN  
FLATTENED BAGS ONLY PLEASE  
& NO MULTI-PACKS THANK YOU

ALL BRANDS OF  
CHEESE POUCHES

DENTAL PRODUCTS  
TOOTHPASTE TUBES,  
BOXES, BRUSHES etc.

BAYLIS & HARDING SOAP  
PUMPS AND REFILL PACKS  
OTHER BRANDS NOT ACCEPTED



Milton Keynes  
Cat Rescue  
Reg Charity No 2166769



# Your questions answered

## When should I start using my bins or sacks?

Start using your new bins or sacks from 28 August and we'll start collecting them from 4 September.

## Why are there two recycling bins/sacks?

Separating paper/card from plastic/metals/glass will help us recycle more items, which is better for the environment. It also puts Milton Keynes ahead of expected new legislation that will eventually require all households to separate recycling into more containers.

## I've received the wrong bins/sacks, what should I do?

If you think we've got this wrong, please use the postcode checker to request a review at <https://tinyurl.com/Wheelie-Bins>. It may take some time for the reviews to be processed.



## What happens if my bin isn't emptied?

If your bin is missed, or if you have any other issues about collections, please let us know at [www.milton-keynes.gov.uk/report-it-waste](http://www.milton-keynes.gov.uk/report-it-waste)

## Can I get extra help to move my bins?

If you have a disability or medical condition and there is nobody else in your household who can put your waste out, you may be eligible for an assisted collection (we may ask for proof of disability).

We can arrange for our collection crew to collect your bins from just outside your front door instead of the boundary.

Contact Customer Services at:  
[customerservices@milton-keynes.gov.uk](mailto:customerservices@milton-keynes.gov.uk)  
or call them on **01908 252570**



**FREE CLUB T-SHIRT PROVIDED**

# FREE NON-CONTACT BOXING SESSIONS FOR YOUNG PEOPLE AGED 12 - 16

Available for those who live in the **Woughton area**, or attend **MK Academy or St. Paul's Catholic School**

EVERY TUESDAY  
4.30PM - 5.30PM

YOUTH CENTRE  
95 JONATHANS COFFEE HALL  
MK6 5DR

**FOR MORE INFO CONTACT:**  
Gemma.simmons@woughtoncommunitycouncil.gov.uk  
07983 599279

**BOXING CLEVER**

Working in partnership with **Milton Keynes City Council** | **POWERED BY LEVELLING UP** | **Funded by UK Government** | **Phil Storer** | **Creating Connections, Supporting Communities Woughton Community Council**

**JUNIOR YOUTH CLUB**  
@No95. Youth Centre. **Coffee Hall**  
**3.30-5pm Every Monday.**  
**For ages 9-12yrs**

*This is your safe space to meet & make friends and access support. Sports, Games, Lego, Craft & activities chosen by you!*

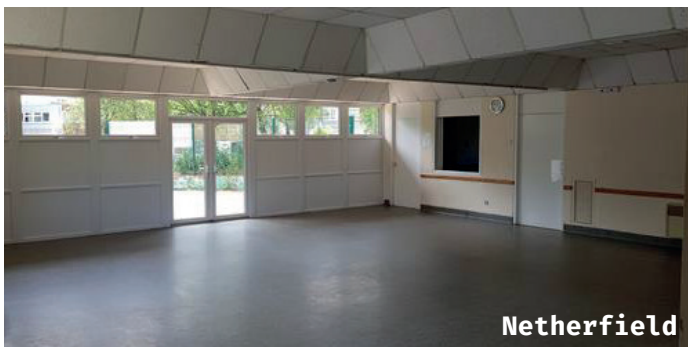
**for more info call us 01908 395681 we're here to help!**  
email: [gemma.simmons@woughtoncommunitycouncil.gov.uk](mailto:gemma.simmons@woughtoncommunitycouncil.gov.uk)  
[www.woughtoncommunitycouncil.gov.uk](http://www.woughtoncommunitycouncil.gov.uk)

**YOUTH PROVISION SAFE PRACTICE MARK**

**Woughton Community Council**

## Did you know YOU can rent our community centres?

Woughton Community Council manages four centres across the parish, at Eaglestone, Coffee Hall, Netherfield, and Tinkers Bridge. These centres are suitable for a wide range of activities – parties, meetings, family events and so much more. They are also used for regular groups such as faith groups, sporting clubs, activities, and hobbies – lots of different options. If you are a Woughton resident, you get cheaper rates too! You can find details of our centres and how to book at <https://www.woughtoncommunitycouncil.gov.uk/hire-a-hall/>





# [Y]OUR YOUTH SERVICE

## Autumn Term

It is getting a bit colder but the youth clubs are warm & dry with hot snacks. Make the most of our warm friendly spaces.



Look on our website for our up to date calendar of projects and sessions



The Youth Team are trained & No95 is fully accessible as a Young & Free C Card registration & collection point. As are all Senior projects

Community Gardening 3.30-4.30pm @No95

Every Wednesday at the Youth Centre Garden. For families & individuals of all ages until end Oct'.

### JUNIOR YOUTH CLUBS

Arts. Crafts. Fun. Sports. Games. Plus Healthy Snacks.

Ages 9-12yrs

Mondays. Coffee Hall.

@no95 Jonathans 3.30-5pm

Wednesdays . Tinkers Bridge

@ TB Meeting Place. 5-6pm

Eaglestone Thursdays . Eaglestone.

@ The Activity Centre. 3.15-4.30pm

### YOUTH CLUBS

@Netherfield Courts & Meeting Place

### SENIORS YOUTH CAFES

Safe facilitated spaces to relax with friends & access support

Weds' @Tinkers Bridge 6-7pm

Thurs' @Eaglestone 4.45-5.45pm



### PLAY RANGERS

@ Tin Man Park. Beanhill TUESDAY 3.30-4.30pm

### BOXING

from October @ SENIORS YOUTH CAFÉ @No95

A safe space to relax with friends, cook, eat, exercise in our purpose built Gym. Develop new skills & access support every Tuesday 4-5.30pm

### YOUTH ADVICE CAFÉ @NO95 WEDNESDAYS 12-1PM



### New Parish Partners

#### U Do IT Dance

Wednesday 5-6pm

Street Dance at the Moorlands centre every Wednesday

Ages 10-14yrs

&

#### 5 On It Basket Ball

@Eaglestone Youth Clubs

3.45-4.45 pm - 7-12s

4.45-5.45pm -13yrs+

### PHOENIX ARTS

@ Eaglestone Activity Centre

FREE every Tuesday

Sparks aged 8-12yrs 5-7pm

Flames aged 13yrs+ 6-8.15pm

Where every child and young

person from our parish can explore, practice and excel

At Drama, Singing, Dance & Musical Theatre and more!

Adult classes coming soon

### UNDER THE UMBRELLA

#### LGBTQ+ Youth Service

Groups for 12-17s & 18-25s weekly.

Parent group monthly.

For more info



Follow Woughton Youth on



For more information about youth services contact Tash or Gemma on 01908395681

07983 527599 or email [tash.darling@woughtoncommunitycouncil.gov.uk](mailto:tash.darling@woughtoncommunitycouncil.gov.uk)

[www.woughtoncommunitycouncil.gov.uk](http://www.woughtoncommunitycouncil.gov.uk)



**WOUGHTON COMMUNITY COUNCIL**  
 WOUGHTON COMMUNITY COUNCIL HUB |  
 THE LOCAL CENTRE | GARRAWAYS | COFFEE HALL |  
 MILTON KEYNES | MK6 5EG  
 TEL: 01908 395681  
 EMAIL: [reception@woughtoncommunitycouncil.gov.uk](mailto:reception@woughtoncommunitycouncil.gov.uk)

\* All email addresses are as follows:  
[firstname.surname@woughtoncommunitycouncil.gov.uk](mailto:firstname.surname@woughtoncommunitycouncil.gov.uk)

**Leadenhall**



**Penny Glasgow**  
 01908 395681  
[penny.glasgow@woughtoncommunitycouncil.gov.uk](mailto:penny.glasgow@woughtoncommunitycouncil.gov.uk)

**Eaglestone**



**Luke Louis**  
[luke.louis@woughtoncommunitycouncil.gov.uk](mailto:luke.louis@woughtoncommunitycouncil.gov.uk)



**Liz Simpkins**  
 07768 288993  
[liz.simpkins@woughtoncommunitycouncil.gov.uk](mailto:liz.simpkins@woughtoncommunitycouncil.gov.uk)



**Michael Holland**  
[michael.holland@woughtoncommunitycouncil.gov.uk](mailto:michael.holland@woughtoncommunitycouncil.gov.uk)



**Tony Coughlan**  
[tony.coughlan@woughtoncommunitycouncil.gov.uk](mailto:tony.coughlan@woughtoncommunitycouncil.gov.uk)

**Coffee Hall**



**Donna Fuller**  
 07925 237282  
[donna.fuller@woughtoncommunitycouncil.gov.uk](mailto:donna.fuller@woughtoncommunitycouncil.gov.uk)



**Nick Scott**  
 01908 606559  
[nick.scott@woughtoncommunitycouncil.gov.uk](mailto:nick.scott@woughtoncommunitycouncil.gov.uk)



**D'Anne Mordecai**  
[danne.mordecai@woughtoncommunitycouncil.gov.uk](mailto:danne.mordecai@woughtoncommunitycouncil.gov.uk)



**Deanna Norris**  
[deanna.norris@woughtoncommunitycouncil.gov.uk](mailto:deanna.norris@woughtoncommunitycouncil.gov.uk)

**OPENING HOURS:**

Mon / Tues / Thurs - 9am-5pm  
 Friday - 9am - 4pm  
 Weds - 9am - 12pm



**Peartree Bridge**



**Sue Smith**  
 01908 476043  
[sue.smith@woughtoncommunitycouncil.gov.uk](mailto:sue.smith@woughtoncommunitycouncil.gov.uk)



**Ruth McMillan**  
 07999 661682  
[ruth.mcmillan@woughtoncommunitycouncil.gov.uk](mailto:ruth.mcmillan@woughtoncommunitycouncil.gov.uk)

**Tinkers Bridge**



**April Rennie**  
[april.ennie@woughtoncommunitycouncil.gov.uk](mailto:april.ennie@woughtoncommunitycouncil.gov.uk)

**Beanhill**



**Alan Williamson**  
 01908 234821  
[alan.williamson@woughtoncommunitycouncil.gov.uk](mailto:alan.williamson@woughtoncommunitycouncil.gov.uk)



VACANT



VACANT

**Netherfield**



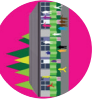
**Janette Bobey**  
 07951 117905  
[janette.bobey@woughtoncommunitycouncil.gov.uk](mailto:janette.bobey@woughtoncommunitycouncil.gov.uk)



**Maggie Ferguson**  
 07703 619574  
[maggie.ferguson@woughtoncommunitycouncil.gov.uk](mailto:maggie.ferguson@woughtoncommunitycouncil.gov.uk)



**Michael Ferguson**  
[michael.ferguson@woughtoncommunitycouncil.gov.uk](mailto:michael.ferguson@woughtoncommunitycouncil.gov.uk)



**Eamon Bobey**  
[eamon.bobey@woughtoncommunitycouncil.gov.uk](mailto:eamon.bobey@woughtoncommunitycouncil.gov.uk)